

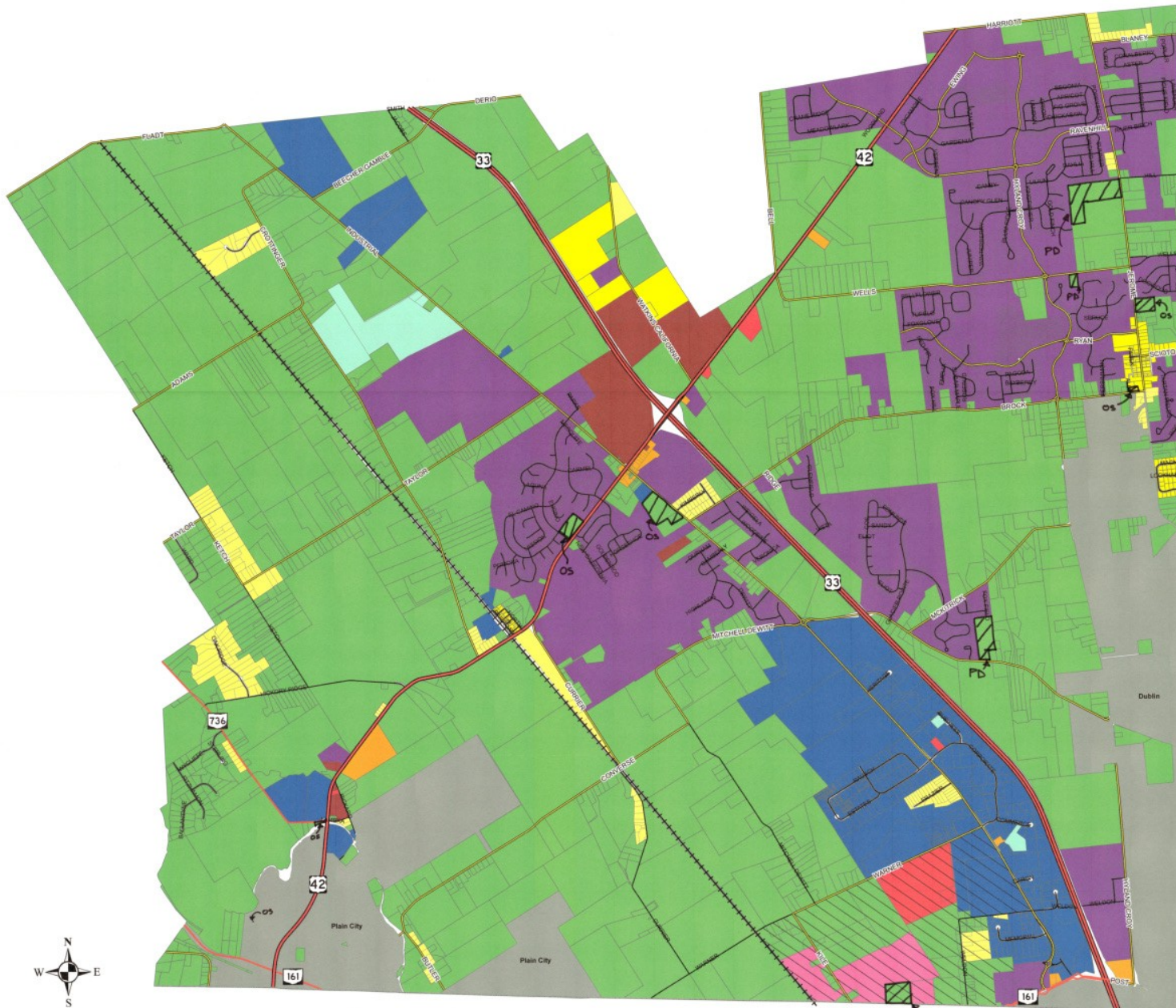
Zoning Map of Jerome Township, Union County, Ohio



Logan-Union-Champaign
Regional Planning Commission
10820 St. Rt. 347
East Liberty, OH 43344
(937) 666-3431

Map Generated: July 2004
Map Updated: July 2025 (ACS)

This map was prepared by LUC. Zoning information was provided by the Township, the party responsible for the accuracy and maintenance of this map.



Zoning District

 RU	 MDR	 LR	 COM	 SRE
 LDR	 ORM	 RR	 PD	 Municipality

Zoning Overlay

 IPD Area	 IPD Applied
---	--

Roads

 Township	 County	 State	 U.S.	 Railroad
---	--	--	---	--

Amendments

- 3/10/25, PD21 - 004, 25.813 +/- Ac., Jerome Rd, PD(SU)
- 5/7/25, 225-001, Various Parcels to OS
- 5/12/25, IPD25 DDP-001, 12.39 +/- Ac., Kile Rd., IPD Applied
- 6/3/25, PD24-003, 18.0 +/- Ac., Mckittrick Rd., RU to PD
- 6/5/25, PD21-004, 3.0 +/- Ac., Wells Rd., PD(SU)



IPD Applied

This is to certify that this Official Zoning Map supersedes and replaces the Official Zoning Map adopted 2-4-2025 as part of the Zoning Resolution Jerome Township, Union County, Ohio.

[Signature]
Chairperson
Jerome Township
Board of Trustees

[Signature]
Fiscal Officer
Jerome Township

Sheet
1/1