



# **LUC Regional Planning Commission**

## **Local Roadway Safety Program for Champaign and Logan Counties**

May 2020

**Executive Committee Officers**

**Ryan Smith, President**  
*Logan County Electric Cooperative*

**Beau Michael, 1<sup>st</sup> Vice President**  
*Union Rural Electric*

**Tyler Bumbalough, 2<sup>nd</sup> Vice President**  
*City of Urbana*

**Andy Yoder, Treasurer**  
*Village of North Lewisburg*

**Brad Bodenmiller, Secretary**  
*LUC Director*

**Brian Davidson, Ex-Officio**  
*ODOT District 6*

**Scott Boyer, Ex-Officio**  
*ODOT District 7*

### LUC Staff

Brad Bodenmiller	Director
Aaron Smith	Planner
Heather Martin	Operations Manager

**Phone:** 937-666-3431  
**Fax:** 937-666-6203  
**Website:** [www.lucplanning.com](http://www.lucplanning.com)  
10820 State Route 347  
**Address:** P.O. Box 219  
East Liberty, OH 43319

This report was prepared in cooperation with the U.S. Department of Transportation's Federal Highway Administration and Federal Transit Administration, the Ohio Department of Transportation, and the local governments of Logan, Union, and Champaign Counties.

The preparation and publication of this document was financed cooperatively by the Federal Highway Administration, the Federal Transit Administration, the Ohio Department of Transportation, and the local governments of Logan, Union, and Champaign Counties.

The contents of this Plan reflect the views of the Logan-Union-Champaign Regional Planning Commission, which is responsible for the facts and the accuracy of the data presented herein. The contents do not necessarily reflect the official view and policies of the Ohio Department of Transportation or the U. S. Department of Transportation. This Plan does not constitute a standard, specification or regulation.

## **Introduction**

The Logan-Union-Champaign Regional Planning Commission (LUC) was formed in 1967 primarily as a result of the announcement by Governor Rhodes and The Ohio State University Officials that the Transportation Research Center of Ohio would be located straddling the Logan and Union County Line. This 8100-acre facility was touted to be the world's largest automotive research center. Several studies indicated that a lot of growth and development would take place around the TRC, which would result in an influx of people, business, and industry. Therefore, local officials felt that a Planning Commission should be formed to start planning for the orderly development of the three counties.

LUC is charged under Ohio Law with certain responsibilities. Among them are the review and approval of subdivisions located in the unincorporated areas and the review and recommendation to township zoning commissions concerning zoning amendments. LUC also acts as an Area-Wide Clearinghouse for applicants who request federal and state assistance for selected projects. Assistance is rendered to township and municipal zoning and planning commissions regarding zoning and subdivision development.

LUC and several of its members have been actively involved in the attraction of new business and industry to the area and in the improvement of US Route 33, 68 and other infrastructure improvements. LUC is funded by the villages, cities, and townships of the three counties and by the three counties themselves on a per capita basis.

In July 2013, the Ohio Department of Transportation (ODOT) initiated a Regional Transportation Planning Organization (RTPO) two-year pilot program with five multi-county planning organizations including LUC. This pilot program provided LUC with funding to conduct regional transportation planning in coordination with local stakeholders, Ohio Metropolitan Planning Organizations (MPO's), and ODOT. Federal transportation guidance encourages RTPO's to enhance rural area local governments' participation in "the planning, coordination, and implementation of statewide strategic long-range transportation plans and transportation improvement programs."

The initial focus of the RTPO planning program was to establish the first ever long range multi-modal transportation plans for these regions, develop transportation databases, and become knowledgeable about local government transportation funding programs. On January 27, 2016, Governor John Kasich formally designated LUC as an Ohio RTPO. This designation formalizes the program that started as a pilot and will help spur better and more informed transportation decision making in Ohio.

As the RTPO continues to evolve from a pilot to permanent program, LUC realizes it needs to build its capacity as a transportation planning agency while continuing to deliver its core land-use related services. A partnership has been formed between LUC and the Clark County-Springfield Transportation Coordinating Committee (CCSTCC) to accomplish this. LUC retains its identity and local decision making as an RTPO while

CCSTCC is contracted to perform transportation planning activities and interface with ODOT and FHWA.

CCSTCC has been conducting the metropolitan transportation planning process as the MPO for the Springfield urbanized area since 1964. The current staff has a broad mix of experience across multiple transportation planning disciplines and will be able to provide that expertise to LUC and its staff. As an MPO, CCSTCC will be able to provide LUC with templates for many planning activities common between MPO's and RTPO's, including short and long range plans. These plans are captured in the work elements of this document. Both LUC and CCSTCC benefit from this interregional cooperation, and believe it can be a statewide model for sharing and bolstering resources.

As the RTPO, LUC will carry out the cooperative, comprehensive, and continuing transportation planning process via planning services provided by CCSTCC. LUC will maintain this planning process through the work elements developed annually in the Planning Work Program (PWP). The PWP describes the work necessary to maintain the transportation planning process and serves as the budgeting mechanism. The transportation planning process implemented through the PWP will be used to address the goals and objectives as defined in the 2015 LUC Long Range Transportation Plan:

#### **Transportation Safety**

- Improve and maintain safety of the roadway network, reducing the number of crashes in the area and striving to fall within the nation's average range of crash data.
  - Identify high crash areas
  - Identify traffic enforcement target areas
  - Create and implement a signage plan to assist in wayfinding, speed regulation, and traffic control
  - Evaluate existing signage for conformance to current standards in high crash areas (intersection and curves)
  - Establish a public service announcement system to reduce animal crashes during deer season

#### **Network Connectivity, Reliability & Efficiency**

- Evaluate and improve the highway network to promote safe, reliable, and efficient travel for all road users.
  - Evaluate crash data and traffic volume to identify areas of improvement
  - Evaluate the need for additional infrastructure at intersections with high traffic volumes
  - Assess local congestion and discuss infrastructure improvements
  - Perform feasibility study of congestion alleviation opportunities
  - Preserve and maintain the existing transportation network

#### **Multimodal Access**

- Improve and expand the public transportation network and non-motorized transportation options to allow easy mobility to all residents and visitors.

- Create a comprehensive Bicycle and Pedestrian Plan for the two counties
- Identify bicycle-pedestrian connections within activity centers such as schools, hospitals, shopping areas, universities, etc.
- Evaluate trip data for current public transportation
- Centralize all modes of transportation with one multimodal access hub

### **Economic Vitality**

- Improve economic growth in the region by providing transportation options that support existing businesses and encourage new economic development opportunities.
  - Ensure that large manufacturing businesses in the region have adequate access to the freight infrastructure network.
  - Facilitate the movement of goods into and out of the area and improve the mobility of all freight modes.

### **Stewardship**

- Commit to the future and longevity of the transportation network by evaluating the social, environmental, and financial circumstances surrounding each project.
  - Address transportation priorities in a manner consistent with fostering social and environmental principles.
  - Develop a fiscally responsible plan and explore funding options to fund proposed transportation improvements.

### **Methodology**

#### *Intersections*

The intersections chosen for study were determined using the Functional Class system and the 2018 Local Roadway Safety Program document was used a reference point. Any additional intersections were identified by using ODOT's GIS Crash Analysis Tool (GCAT) for calendar years 2016-2018 and searching for high frequencies. This supplemental list of intersections was composed of locations that had 10 or more crashes (5 or more in rural areas) over the study time period. Intersections that had a fatal crash were included in the list, regardless of frequency.

After the list of intersections was prepared, individual analyses were performed using ODOT's Crash Analysis Module (CAM) Tool in conjunction with data files from the TMS GIS Crash Analysis Tool (GCAT) to analyze the crash data for each intersection. Crashes within 250 feet of each urban intersection and 500 feet at most rural intersections were classified based upon severity (fatal, injury, property damage) and type of crash (angle, rear-end, etc.). The CAM Tool Excel spreadsheets for each intersection are on file with the CCSTCC for future reference to examine individual crash reports.

The intersections were scored and ranked using portions of ODOT's Ohio Enhanced Crash Location Identification System (OECLIS). Intersections were ranked using a Hazard Index, which is the weighted sum of the ranks calculated for Frequency, Equivalent Property Damage Only (EPDO) value, and Relative Severity Index (RSI).

For this document, the Hazard Index was calculated by assigning a weight of 3 to the frequency rank, a weight of 1 to the EPDO rank, and a weight of 2.5 to the RSI Rank.

Frequency is defined as the number of crashes that occurred at the intersection between 2016 and 2018.

EPDO is calculated by assigning a weight to each severity level. EPDO weighted values were provided by ODOT's CAM Tool. Using the EPDO method, fatal crashes are assigned a weight of 122.8, injury crashes are assigned a weight of 7.3, and Property Damage Only (PDO) or unknown types are assigned a weight of 1.0.

RSI is calculated by assigning a factor to each type of crash. The factor represents the relative cost to society for each crash type. RSI factors were provided by ODOT's CAM Tool. The factors are defined in the table below:

<b>Accident Type</b>	<b>Rural Factor</b>	<b>Urban Factor</b>
(0) Not Stated	\$47,469	\$35,589
(1) Head On	\$265,345	\$84,094
(2) Rear End	\$28,472	\$19,501
(3) Backing	\$14,032	\$11,254
(4) Sideswipe Meeting	\$59,768	\$32,812
(5) Sideswipe Passing	\$26,601	\$14,671
(6) Angle	\$55,764	\$25,323
(7) Parked Motor Vehicle	\$35,410	\$16,188
(8) Pedestrian	\$215,589	\$119,670
(9) Animal	\$11,748	\$10,845
(10) Train	\$275,022	\$83,117
(11) Pedal-Cycle	\$138,769	\$68,156
(12) Other Non-Moving Vehicle	\$111,370	\$15,372
(13) Fixed Object	\$43,952	\$34,873
(14) Other Object	\$20,740	\$21,209
(16) Overturning	\$85,223	\$77,399
(17) Other Non-Collision	\$21,573	\$23,557
(18) Left Turn	\$62,153	\$32,614

A frequency threshold was established for a couple of reasons. First and foremost, a smaller list of intersections is simpler and allows for a more focused approach to correcting county-wide safety issues. The other issue with a larger list is the way that the hazard index is calculated. Because the hazard index uses rankings instead of data, too many locations can skew the data and not provide a clear picture of the level of importance.

For this document, a frequency threshold of 9 was applied to both the rural and urban intersections.

### Corridors

The corridors selected for this study consisted of all non-freeway Federal-aid roadways on the Functional Class system. After the initial list of corridors to be studied was prepared, individual analyses were performed using ODOT's CAM Tool in conjunction with GCAT data files to analyze crash data for each corridor. The CAM Tool Excel spreadsheets for each corridor are on file with the CCSTCC for future reference to examine individual crash reports.

Corridors were ranked using a Hazard Index, which is the weighted sum of the ranks calculated for Crash Rate, Frequency, and Equivalent Property Damage Only (EPDO) rate. Similar to other MPO's methodology, the Hazard Index was calculated by assigning a weight of 0.4 to the frequency rank, a weight of 0.3 to the crash rate rank, and a weight of 0.3 to the EPDO rank.

Frequency is defined as the number of crashes that occurred between 2016 and 2018.

The crash rate is calculated as follows:

$$\frac{(3 \text{ year crash total})}{(3 \text{ years})(\text{ADT})(365 \text{ days/year})(\text{section length})} \times 1,000,000$$

EPDO is calculated by assigning a weight to each severity level. EPDO weighted values were provided by ODOT's CAM Tool. Using the EPDO method, fatal crashes are assigned a weight of 122.8, injury crashes are assigned a weight of 7.3, and Property Damage Only (PDO) or unknown types are assigned a weight of 1.0. The number is then divided by frequency of crashes.

### **Notes about the Data**

The data examined for this study is non-freeway conditions only. Crashes occurring on freeway portions of US68 and US33 are compiled and examined by the Ohio Department of Transportation. Crashes located to areas such as US68 and US33 are attributed to the ramp intersections only.

To increase clarity, intersections were identified by "Street" and "Reference", where "Street" is defined as the North/South roadway and "Reference" is defined as the West/East roadway at the point where they intersect.

Urban and Rural classification was determined using the 2010 Census Urban Areas data. Intersections that bordered on the Urban Area boundaries or have characteristics contrary to their location were examined individually and classified by staff opinion.

This document lists several locations where more than one intersection or conflict point is grouped into one area for statistical purposes. This is due to close spacing or traffic function. The complex intersections on the list are as follows:

- Main and Court/Scioto/Market/Water (close proximity/overlap of crashes)

- Jefferson and Scioto/Court (close proximity/overlap of crashes)
- Jefferson/Patrick and Water (close proximity/overlap of crashes)
- Kenton and Court/Scioto/Market/Water (close proximity/overlap of crashes)
- High/Russell and Miami/Court/Market (close proximity/overlap of crashes), also include Washington and Dewey due to the close proximity
- US33/SR366 and SR235 (close proximity/overlap of crashes)
- Orchard Island and US33/Main (close proximity/overlap of crashes)

**Tables, Maps, and Appendix**

Table 1	Regional Intersections – Hazard Index
Table 2	Regional Intersections – By Severity
Table 3	Regional Intersections – By Type
Table 4	Rural Corridor – Hazard Index
Table 5	Urban Corridor – Hazard Index
Map 1	2016-2018 High Hazard Intersections – Regional
Map 2	2016-2018 High Hazard Intersections – Cities of Urbana and Bellefontaine
Map 3	2016-2018 Fatal Crashes
Map 4	2016-2018 Hazard Index – Rural Corridors
Map 5	2016-2018 Hazard Index – Urban Corridors - Cities of Urbana and Bellefontaine
Map 6	2016-2018 Hazard Index – Urban Corridors - Indian Lake Region
Appendix	ODOT District 7 2018 High Hazard Locations

Hazard Index Rank	Street (N/S)	Reference (W/E)	County	Jurisdiction	Frequency	Frequency Rank	EPDO	EPDO Rank	RSI	RSI Rank	Hazard Index
1	Main (US68)	Sandusky (SR47)	Logan	Bellefontaine	51	3	76.2	8	\$27,572	20	67.0
2	Three Mile	SR29	Champaign	Urbana Twp.	18	14	93.6	7	\$51,391	9	71.5
3	Main (US68)	Court/Scioto (US36)/Market/Water	Champaign	Urbana	139	1	265.0	1	\$24,366	30	79.0
4	Ludlow (SR814)	US36	Champaign	Union Twp.	14	23	173.6	3	\$75,362	3	79.5
5	SR235	SR47	Logan	Pleasant Twp.	18	14	62.1	13	\$45,163	11	82.5
6	Main (US68)	Lake/Carlisle	Logan	Bellefontaine	21	10	65.1	12	\$31,264	17	84.5
7	Madriver (SR47)	Sandusky	Logan	Bellefontaine	28	5	65.8	11	\$24,678	29	98.5
8	Jefferson	Scioto (US36)/Court	Champaign	Urbana	57	2	170.4	4	\$22,461	36	100.0
9	TR216	CR18	Logan	Lake Twp.	14	23	70.7	9	\$42,024	12	108.0
9	SR560	US36	Champaign	Mad River Twp.	14	23	39.2	24	\$64,898	6	108.0
11	East Lawn	Scioto (US36)	Champaign	Urbana	17	16	48.5	16	\$27,002	22	119.0
12	US68	Hickory Grove	Champaign	Urbana Twp.	11	31	36.2	25	\$81,821	1	120.5
12	Main (SR29)	Sandusky (SR4)	Champaign	Goshen Twp.	16	18	28.6	34	\$41,242	13	120.5
14	Ludlow	SR296 (S)	Champaign	Salem Twp.	12	27	30.9	30	\$73,924	4	121.0
15	Ames	US36/SR29	Champaign	Urbana	15	21	52.8	14	\$31,046	18	122.0
15	Main	Columbus	Logan	Bellefontaine	36	4	67.5	10	\$20,845	40	122.0
17	Kenton	Court/Scioto (US36)/Market/Water	Champaign	Urbana	16	18	47.5	17	\$27,518	21	123.5
17	Main (US68)	Commercial (SR55)	Champaign	Urbana	19	12	44.2	20	\$24,932	27	123.5
19	Main	Chillicothe	Logan	Bellefontaine	25	9	178.3	2	\$20,961	39	126.5
19	Main (US68)	Washington/Maple	Logan	Bellefontaine	26	8	51.2	15	\$22,665	35	126.5
21	Hayes	Sandusky (SR540)	Logan	Bellefontaine	16	18	34.9	26	\$28,830	19	127.5
22	High/Russell	Miami (US36)/Court/Market	Champaign	Urbana	27	6	45.9	19	\$21,925	37	129.5
23	SR559	US36	Champaign	Rush Twp.	9	37	143.4	5	\$54,452	8	136.0
23	SR560/Valley Pike	SR55	Champaign	Mad River Twp.	12	27	30.9	30	\$48,385	10	136.0
25	US68	Urbana	Champaign	Urbana Twp.	11	31	23.6	36	\$66,582	5	141.5
26	Main (US68)	Powell	Champaign	Urbana	12	27	43.5	21	\$32,562	16	142.0
26	US68	TR200	Logan	Bellefontaine	19	12	31.6	29	\$24,298	31	142.5
28	Urbana-Moorefield Pike	SR54	Champaign	Urbana Twp.	9	37	34.2	27	\$77,438	2	143.0
29	Main	Auburn (US68)	Logan	Bellefontaine	27	6	39.6	23	\$20,759	41	143.5
30	Madriver (US68)	Columbus	Logan	Bellefontaine	17	16	29.6	32	\$24,762	28	150.0
31	US68	Gunntown	Logan	Bellefontaine	20	11	32.6	28	\$21,061	38	156.0
32	Detroit	Sandusky (SR47)	Logan	Bellefontaine	15	21	46.5	18	\$23,256	33	163.5
33	Springfield	Main (US36)	Champaign	Johnson Twp.	9	37	15.3	40	\$61,656	7	168.5
34	SR235	US36	Champaign	Johnson Twp.	10	33	16.3	38	\$39,036	14	172.0
35	Oakland (SR29)	Light	Champaign	Urbana	9	37	130.8	6	\$26,068	25	179.5
36	Main (US68)	Light	Champaign	Urbana	12	27	43.5	21	\$23,436	32	182.0
37	SR117	SR366/TR100	Logan	McArthur Twp.	9	37	15.3	40	\$34,260	15	188.5
38	Madriver (US68)	Chillicothe	Logan	Bellefontaine	14	23	26.6	35	\$22,857	34	189.0
39	US33/SR366	Lake (SR235)	Logan	Lakeview	10	33	28.9	33	\$26,858	23	189.5
40	Garfield	Sandusky (SR47)	Logan	Bellefontaine	10	33	10.0	42	\$26,529	24	201.0
41	Orchard Island (SR708)	US33/Main (SR366)	Logan	Russells Point	9	37	9.0	43	\$26,064	26	219.0
42	Detroit	Columbus	Logan	Bellefontaine	10	33	16.3	38	\$15,818	43	244.5
43	Edgewood	US36	Champaign	Urbana	9	37	21.6	37	\$20,547	42	253.0

**Acronyms:**

EPDO - Equivalent Property Damage Only

RSI - Relative Severity Index



EPDO Rank	Street (N/S)	Reference (W/E)	County	Jurisdiction	2016-2018 Totals				
					Total Within 250'/500'	Fatal	Injury	PDO	EPDO
1	Main (US68)	Court/Scioto (US36)/Market/Water	Champaign	Urbana	139	0	20	119	265.0
2	Main	Chillicothe	Logan	Bellefontaine	25	1	5	19	178.3
3	Ludlow (SR814)	US36	Champaign	Union Twp.	14	1	6	7	173.6
4	Jefferson	Scioto (US36)/Court	Champaign	Urbana	57	0	18	39	170.4
5	SR559	US36	Champaign	Rush Twp.	9	1	2	6	143.4
6	Oakland (SR29)	Light	Champaign	Urbana	9	1	0	8	130.8
7	Three Mile	SR29	Champaign	Urbana Twp.	18	0	12	6	93.6
8	Main (US68)	Sandusky (SR47)	Logan	Bellefontaine	51	0	4	47	76.2
9	TR216	CR18	Logan	Lake Twp.	14	0	9	5	70.7
10	Main	Columbus	Logan	Bellefontaine	36	0	5	31	67.5
11	Madrider (SR47)	Sandusky	Logan	Bellefontaine	28	0	6	22	65.8
12	Main (US68)	Lake/Carlisle	Logan	Bellefontaine	21	0	7	14	65.1
13	SR235	SR47	Logan	Pleasant Twp.	18	0	7	11	62.1
14	Ames	US36/SR29	Champaign	Urbana	15	0	6	9	52.8
15	Main (US68)	Washington/Maple	Logan	Bellefontaine	26	0	4	22	51.2
16	East Lawn	Scioto (US36)	Champaign	Urbana	17	0	5	12	48.5
17	Kenton	Court/Scioto (US36)/Market/Water	Champaign	Urbana	16	0	5	11	47.5
18	Detroit	Sandusky (SR47)	Logan	Bellefontaine	15	0	5	10	46.5
19	High/Russell	Miami (US36)/Court/Market	Champaign	Urbana	27	0	3	24	45.9
20	Main (US68)	Commercial (SR55)	Champaign	Urbana	19	0	4	15	44.2
21	Main (US68)	Powell	Champaign	Urbana	12	0	5	7	43.5
21	Main (US68)	Light	Champaign	Urbana	12	0	5	7	43.5
23	Main	Auburn (US68)	Logan	Bellefontaine	27	0	2	25	39.6
24	SR560	US36	Champaign	Mad River Twp.	14	0	4	10	39.2
25	US68	Hickory Grove	Champaign	Urbana Twp.	11	0	4	7	36.2
26	Hayes	Sandusky (SR540)	Logan	Bellefontaine	16	0	3	13	34.9
27	Urbana-Moorefield Pike	SR54	Champaign	Urbana Twp.	9	0	4	5	34.2
28	US68	Gunntown	Logan	Bellefontaine	20	0	2	18	32.6
29	US68	TR200	Logan	Bellefontaine	19	0	2	17	31.6
30	Ludlow	SR296 (S)	Champaign	Salem Twp.	12	0	3	9	30.9
30	SR560/Valley Pike	SR55	Champaign	Mad River Twp.	12	0	3	9	30.9
32	Madrider (US68)	Columbus	Logan	Bellefontaine	17	0	2	15	29.6
33	US33/SR366	Lake (SR235)	Logan	Lakeview	10	0	3	7	28.9
34	Main (SR29)	Sandusky (SR4)	Champaign	Goshen Twp.	16	0	2	14	28.6
35	Madrider (US68)	Chillicothe	Logan	Bellefontaine	14	0	2	12	26.6
36	US68	Urbana	Champaign	Urbana Twp.	11	0	2	9	23.6
37	Edgewood	US36	Champaign	Urbana	9	0	2	7	21.6
38	SR235	US36	Champaign	Johnson Twp.	10	0	1	9	16.3
38	Detroit	Columbus	Logan	Bellefontaine	10	0	1	9	16.3
40	Springfield	Main (US36)	Champaign	Johnson Twp.	9	0	1	8	15.3
40	SR117	SR366/TR100	Logan	McArthur Twp.	9	0	1	8	15.3
42	Garfield	Sandusky (SR47)	Logan	Bellefontaine	10	0	0	10	10.0
43	Orchard Island (SR708)	US33/Main (SR366)	Logan	Russells Point	9	0	0	9	9.0



RSI Rank	Street (N/S)	Reference (W/E)	County	Jurisdiction	2016-2018 Totals																		RSI			
					Total Within 250'/500'	Fatal	Injury	PDO	(0) Not Stated	(1) Head On	(2) Rear End	(3) Backing	(4) Sideswipe Meeting	(5) Sideswipe Passing	(6) Angle	(7) Parked Motor Vehicle	(8) Pedestrian	(9) Animal	(10) Train	(11) Pedal-Cycle	(12) Other Non-moving Vehicle	(13) Fixed Object		(14) Other Object	(16) Overturning	(17) Other Non-Collision
1	US68	Hickory Grove	Champaign	Urbana Twp.	11	0	4	7	0	2	2	0	1	2	2	0	0	0	0	0	2	0	0	0	0	\$81,821
2	Urbana-Moorefield Pike	SR54	Champaign	Urbana Twp.	9	0	4	5	0	1	1	0	0	0	0	0	0	0	0	0	0	0	0	0	2	\$77,438
3	Ludlow (SR814)	US36	Champaign	Union Twp.	14	1	6	7	0	2	2	1	0	0	3	0	0	1	0	0	0	2	0	0	3	\$75,362
4	Ludlow	SR296 (S)	Champaign	Salem Twp.	12	0	3	9	0	2	1	1	0	1	1	0	0	2	0	0	0	0	0	1	3	\$73,924
5	US68	Urbana	Champaign	Urbana Twp.	11	0	2	9	0	1	0	0	0	2	1	0	0	0	0	0	2	0	0	1	4	\$66,582
6	SR560	US36	Champaign	Mad River Twp.	14	0	4	10	0	1	2	0	0	0	1	0	0	0	0	0	0	5	0	0	5	\$64,898
7	Springfield	Main (US36)	Champaign	Johnson Twp.	9	0	1	8	0	1	3	0	1	2	1	1	0	0	0	0	0	0	0	0	0	\$61,656
8	SR559	US36	Champaign	Rush Twp.	9	1	2	6	0	0	0	0	0	0	8	0	0	0	0	0	1	0	0	0	0	\$54,452
9	Three Mile	SR29	Champaign	Urbana Twp.	18	0	12	6	0	0	1	0	0	0	13	0	0	0	0	0	0	2	0	0	1	\$51,391
10	SR560/Valley Pike	SR55	Champaign	Mad River Twp.	12	0	3	9	0	0	1	0	0	0	7	0	0	1	0	0	2	0	0	0	1	\$48,385
11	SR235	SR47	Logan	Pleasant Twp.	18	0	7	11	0	0	4	0	0	0	11	0	0	2	0	0	0	0	0	0	1	\$45,163
12	TR216	CR18	Logan	Lake Twp.	14	0	9	5	0	0	2	0	0	2	6	0	0	1	0	0	0	3	0	0	0	\$42,024
13	Main (SR29)	Sandusky (SR4)	Champaign	Goshen Twp.	16	0	2	14	0	0	7	2	1	3	1	0	1	0	0	0	0	0	0	1	0	\$41,242
14	SR235	US36	Champaign	Johnson Twp.	10	0	1	9	0	0	4	1	0	1	2	0	0	0	0	0	0	0	0	0	2	\$39,036
15	SR117	SR366/TR100	Logan	McArthur Twp.	9	0	1	8	0	0	3	0	0	0	2	0	0	2	0	0	0	2	0	0	0	\$34,260
16	Main (US68)	Powell	Champaign	Urbana	12	0	5	7	0	0	4	0	2	0	1	2	1	0	0	0	2	0	0	0	0	\$32,562
17	Main (US68)	Lake/Carlisle	Logan	Bellefontaine	21	0	7	14	0	0	9	1	0	1	4	0	1	0	0	2	0	0	0	0	3	\$31,264
18	Ames	US36/SR29	Champaign	Urbana	15	0	6	9	0	0	2	0	0	3	1	1	1	0	0	0	1	0	0	1	5	\$31,046
19	Hayes	Sandusky (SR540)	Logan	Bellefontaine	16	0	3	13	0	0	5	2	0	1	2	0	1	0	0	0	1	0	0	1	3	\$28,830
20	Main (US68)	Sandusky (SR47)	Logan	Bellefontaine	51	0	4	47	0	3	25	3	0	3	5	1	1	0	0	0	0	0	0	0	10	\$27,572
21	Kenton	Court/Scioto (US36)/Market/Water	Champaign	Urbana	16	0	5	11	0	0	7	0	0	4	1	0	1	0	0	0	1	0	0	0	2	\$27,518
22	East Lawn	Scioto (US36)	Champaign	Urbana	17	0	5	12	0	1	7	0	0	2	1	1	0	0	0	0	2	0	0	0	3	\$27,002
23	US33/SR366	Lake (SR235)	Logan	Lakeview	10	0	3	7	0	0	0	0	1	2	3	0	0	0	0	0	0	0	0	0	4	\$26,858
24	Garfield	Sandusky (SR47)	Logan	Bellefontaine	10	0	0	10	0	0	5	0	1	0	0	0	0	0	0	0	2	0	0	0	2	\$26,529
25	Oakland (SR29)	Light	Champaign	Urbana	9	1	0	8	0	0	0	0	0	1	1	1	0	1	0	0	2	0	0	0	3	\$26,068
26	Orchard Island (SR708)	US33/Main (SR366)	Logan	Russells Point	9	0	0	9	0	0	3	0	0	0	3	0	0	0	0	0	1	0	0	0	2	\$26,064
27	Main (US68)	Commercial (SR55)	Champaign	Urbana	19	0	4	15	0	0	12	1	0	1	2	0	1	1	0	0	0	0	0	0	1	\$24,932
28	Madriver (US68)	Columbus	Logan	Bellefontaine	17	0	2	15	0	0	2	6	0	3	2	0	1	0	0	0	1	0	0	0	2	\$24,762
29	Madriver (SR47)	Sandusky	Logan	Bellefontaine	28	0	6	22	0	0	13	2	0	2	7	0	1	0	0	0	1	1	0	0	1	\$24,678
30	Main (US68)	Court/Scioto (US36)/Market/Water	Champaign	Urbana	139	0	20	119	0	2	48	7	0	21	28	7	2	0	0	1	0	15	0	0	2	\$24,366
31	US68	TR200	Logan	Bellefontaine	19	0	2	17	0	0	7	1	0	1	4	0	0	0	0	0	1	0	0	0	5	\$24,298
32	Main (US68)	Light	Champaign	Urbana	12	0	5	7	0	0	7	1	0	1	2	0	0	0	0	1	0	0	0	0	0	\$23,436
33	Detroit	Sandusky (SR47)	Logan	Bellefontaine	15	0	5	10	0	0	6	0	0	1	6	0	0	0	0	0	0	0	0	0	2	\$23,256
34	Madriver (US68)	Chillicothe	Logan	Bellefontaine	14	0	2	12	0	0	4	1	0	2	4	0	0	0	0	0	1	0	0	0	2	\$22,857
35	Main (US68)	Washington/Maple	Logan	Bellefontaine	26	0	4	22	0	0	14	0	1	3	1	1	0	0	0	0	1	0	0	0	5	\$22,665
36	Jefferson	Scioto (US36)/Court	Champaign	Urbana	57	0	18	39	0	0	20	1	0	9	17	1	0	0	0	0	3	0	0	0	6	\$22,461
37	High/Russell	Miami (US36)/Court/Market	Champaign	Urbana	27	0	3	24	0	0	5	2	0	4	11	2	0	0	0	0	2	0	0	0	1	\$21,925
38	US68	Guntnow	Logan	Bellefontaine	20	0	2	18	0	0	11	0	0	2	4	0	0	1	0	0	0	0	0	0	2	\$21,061
39	Main	Chillicothe	Logan	Bellefontaine	25	1	5	19	0	1	11	6	0	1	3	2	0	0	0	0	1	0	0	0	0	\$20,961
40	Main	Columbus	Logan	Bellefontaine	36	0	5	31	0	0	14	13	0	1	3	1	1	0	0	0	3	0	0	0	0	\$20,845
41	Main	Auburn (US68)	Logan	Bellefontaine	27	0	2	25	0	0	15	1	0	5	2	0	0	0	0	0	1	0	0	0	3	\$20,759
42	Edgewood	US36	Champaign	Urbana	9	0	2	7	0	0	0	0	0	1	3	3	0	1	0	0	0	1	0	0	0	\$20,547
43	Detroit	Columbus	Logan	Bellefontaine	10	0	1	9	0	0	3	4	0	2	1	0	0	0	0	0	0	0	0	0	0	\$15,818



Hazard Index Rank	Roadway Section	From	To	County	Frequency	Frequency Rank	Crash Rate	Crash Rate Rank	EPDO Rate	EPDO Rate Rank	Hazard Index
1	CR1	SR245	CR5	Logan	20	43	6.2	19	8.4	20	28.9
2	SR347	CR154	UNI CL	Logan	27	23	4.6	40	6.7	32	30.8
3	CR153	CR28	SR287	Logan	19	49	5.1	31	10.4	15	33.4
4	SR287	SR245	TR150	Logan	24	28	3.9	51	7.1	30	35.5
5	SR296	SR29	US68	Champaign	17	65	6.7	16	10.0	16	35.6
6	Pisgah	SR54	SR29	Champaign	21	40	5.1	31	5.5	41	37.6
7	County Line	CR468 (Springfield-Urbana)	CR92 (Urbana Moorefield)	Champaign	24	28	9.0	9	3.9	83	38.8
8	CR10	TR179	US33 e. ramps	Logan	33	16	3.4	66	5.3	44	39.4
9	SR47	SHE CL	SR235	Logan	38	12	3.1	85	5.7	36	41.1
10	Ludlow	SR29	US36	Champaign	22	36	13.1	3	3.6	95	43.8
11	Baird	US68	SR287	Logan	18	57	3.4	66	8.1	21	48.9
12	US36	SR814	CR10 (Parkview)	Champaign	38	12	2.3	133	9.2	17	49.8
13	SR347	CR152	US33 w. ramps	Logan	12	96	5.6	25	11.2	14	50.1
14	Main (US68)	Dellinger	SR296	Champaign	41	10	2.4	127	6.3	33	52.0
15	CR18	CR43	TR216	Logan	16	71	4.8	37	5.3	44	52.7
16	CR39	CR259	SR273	Logan	11	103	5.0	34	14.4	8	53.8
17	Sandusky	Newford	US33 ne. ramps	Logan	22	36	5.4	27	3.3	106	54.3
18	SR292	TR170	CR12	Logan	20	43	2.5	117	13.5	11	55.6
19	Main	US33 n. ramps	SR638	Logan	65	2	2.2	137	4.7	52	57.5
20	Springfield Urbana	CLA CL	US68	Champaign	23	33	3.6	57	3.7	91	57.6
21	SR117	SR366	US33	Logan	57	3	2.2	137	4.5	56	59.1
22	Christiansburg-Jackson	SR235	CR17 (Runkle)	Champaign	16	71	3.5	62	5.3	44	60.2
23	SR29	TR101 (Dugan)	TR222 (Ludlow)	Champaign	37	14	2.3	133	4.7	52	61.1
24	Runkle	SR235	CR22 (Kite)	Champaign	11	103	4.3	42	6.2	34	64.0
25	Storms Creek	SR55	CR15 (Valley Pike)	Champaign	15	78	5.3	28	3.9	83	64.5
26	Zimmerman	CR26 (Heck Hill)	US36	Champaign	16	71	5.9	23	3.4	101	65.6
27	Hickory Grove	US68	CR92 (Urbana Moorefield)	Champaign	20	43	3.7	55	3.2	107	65.8
28	SR29	SR560	CR25 (Hanna)	Champaign	18	57	2.4	127	9.2	17	66.0
29	Christiansburg-Jackson	SR55	SR235	Champaign	11	103	9.4	6	3.9	83	67.9
30	Ludlow	TR219 (Sibley)	SR245	Champaign	10	115	3.4	66	14.4	8	68.2
31	US68	CR92 (Hickory Grove)	Lewis B Moore (SR55)	Champaign	52	5	1.7	181	5.5	41	68.6
32	CR200	CR18	US68	Logan	22	36	17.0	2	2.1	184	70.2
33	Valley	Storms Creek	SR55	Champaign	27	23	3.3	76	2.9	130	71.0
34	Dugan	SR29	TR102 (Childrens Home)	Champaign	16	71	6.4	18	3.0	125	71.3
35	SR296	CR216 (Urbana Woodstock)	SR245	Champaign	27	23	2.8	96	3.1	112	71.6
36	St. Paris-Jackson	CR17 (Runkle)	US36	Champaign	9	129	6.1	20	5.2	47	71.7
37	SR559	US36	Bennett	Champaign	9	129	3.5	62	16.6	7	72.3
38	SR560	SR55	US36	Champaign	18	57	2.5	117	4.9	50	72.9
39	US68	CR468 (Springfield-Urbana)	CR92 (Hickory Grove)	Champaign	49	7	1.5	199	5.5	41	74.8
40	SR814	US36	SR296	Champaign	30	18	2.8	96	2.9	130	75.0
41	CR130	CR13	Williams	Logan	17	65	3.4	66	3.2	107	77.9
42	Troy	CR18	CR11	Logan	11	103	3.4	66	4.4	60	79.0
43	SR56	SR4	CR182 (Catawba Mechanicsburg)	Champaign	11	103	2.5	117	13.8	10	79.3
44	SR47	CR5	SR292	Logan	22	36	6.1	20	1.9	198	79.8
45	West Liberty	SR508	Gunntown	Logan	53	4	1.4	207	4.5	56	80.5
46	Powell	US68	SR54	Champaign	9	129	4.3	42	4.5	56	81.0
47	SR235	SR55	CR193 (Old Troy Pike)	Champaign	15	78	2.6	108	4.4	60	81.6
48	Old Troy	SR560	SR55	Champaign	5	185	11.2	4	7.3	22	81.8
49	SR274	SR117	US68	Logan	16	71	2.8	96	3.8	88	83.6
50	US68	SR638	SR273	Logan	20	43	1.4	207	8.7	19	85.0
51	SR47	CR9	CR5	Logan	20	43	2.8	96	2.9	130	85.0
52	SR54	CR92 (Urbana Moorefield)	CR9 (Powell)	Champaign	16	71	2.7	104	3.8	88	86.0
53	SR507	US68	SR245	Champaign	15	78	4.3	41	2.7	143	86.4
53	CR5	US68	CR1	Logan	18	57	5.3	28	2.1	184	86.4
55	SR245	TR217 (Metz)	SR296	Champaign	8	138	4.3	42	4.2	63	86.7
56	Miami	SR235	CR43	Logan	18	57	4.1	47	2.4	167	87.0
57	Sante Fe	SHE CL	CR54	Logan	10	115	9.1	7	2.9	130	87.1
58	Sandusky	US33 ne. ramps	TR230	Logan	10	115	2.4	127	13.2	12	87.7
59	US36	Dugan	SR814	Champaign	25	26	1.7	181	4.0	80	88.7
60	SR235	SR29	LOG CL	Champaign	14	86	1.8	172	11.5	13	89.9
61	SR4	CR183 (Catawba Mechanicsburg)	SR29	Champaign	15	78	3.1	85	3.1	112	90.3
62	US36	CR10 (Parkview)	SR559	Champaign	12	96	1.8	172	22.4	5	91.5
63	CR12	CR83	CR50	Logan	18	57	4.2	46	2.1	184	91.8
64	SR292	CR12	CR20	Logan	21	40	3.6	57	1.9	198	92.5
65	Catawba Mechanicsburg	SR56	CR183 (Catawba Mechanicsburg)	Champaign	6	172	3.3	76	22.4	5	93.1
66	Kiser Lake	CR25 (Ward)	TR94 (Carysville)	Champaign	8	138	3.4	66	4.2	63	93.9
66	Pike (SR55)	Lincoln	SR235	Champaign	8	138	3.4	66	4.2	63	93.9
68	US68	SR296	CR14 (Upper Valley)	Champaign	28	20	0.7	256	6.9	31	94.1
69	SR235	SR47	TR215	Logan	23	33	2.7	104	2.4	167	94.5
70	CR63	SR235	SR508	Logan	12	96	9.5	5	2.1	184	95.1
71	US33	SR117	US68	Logan	85	1	1.0	233	3.9	83	95.2
72	TR179	CR10	TR55	Logan	12	96	9.1	7	2.1	184	95.7
73	SR559	SR29	SR161	Champaign	11	103	4.3	42	2.7	143	96.7
74	Middle Urbana	TR95 (Middle Urbana)	CR92 (Hickory Grove)	Champaign	15	78	3.3	76	2.7	143	96.9
75	CR5	CR29	CR10	Logan	19	49	3.5	62	2.0	196	97.0
76	US36	CR67 (Zimmerman)	SR560	Champaign	28	20	2.1	149	2.6	149	97.4
77	SR638	US68	SR273	Logan	24	28	2.7	104	2.1	184	97.6
78	SR117	HAR CL	SR366	Logan	50	6	1.4	207	3.1	112	98.1
79	CR39	TR100	CR97	Logan	5	185	4.1	47	6.0	35	98.6
79	US36	SR235	CR18/CR19 (Springfield)	Champaign	25	26	3.0	87	1.8	207	98.6
81	CR55	CR29	CR10	Logan	10	115	4.1	47	2.9	130	99.1
82	SR54	CR9 (Powell)	Water	Champaign	14	86	4.0	50	2.4	167	99.5
83	SR47	Allison	CR9	Logan	7	153	3.3	76	4.6	54	100.2
84	SR55	SR560	CR92 (Hickory Grove)	Champaign	10	115	3.9	51	2.9	130	100.3
85	Sante Fe	CR83	SR235	Logan	4	202	5.2	30	5.7	36	100.6
86	US33	SR720	SR708	Logan	13	88	1.9	162	4.4	60	101.8
87	US36	CR26 (Heck Hill)	CR67 (Zimmerman)	Champaign	32	17	1.6	192	3.0	125	101.9
88	Hickory Grove	SR55	US68	Champaign	4	202	7.1	13	4.2	63	103.6
89	SR245	SR287	CHP CL	Logan	5	185	2.8	96	26.6	3	103.7
89	Short Cut	SR54	SR54	Champaign	5	185	2.8	96	26.6	3	103.7



Hazard Index Rank	Roadway Section	From	To	County	Frequency	Frequency Rank	Crash Rate	Crash Rate Rank	EPDO Rate	EPDO Rate Rank	Hazard Index
91	SR55	CR193 (Old Troy)	Edgewood	Champaign	11	103	5.6	25	2.1	184	103.9
92	CR43	CR18	CR11	Logan	21	40	3.3	76	1.6	219	104.5
93	Parkview	SR161	US36	Champaign	6	172	3.6	57	4.2	63	104.8
93	SR54	CR97 (Prairie)	CR92 (Urbana Moorefield)	Champaign	10	115	2.3	133	4.2	63	104.8
95	US33	SR235	SR720	Logan	19	49	1.4	207	4.0	80	105.7
95	SR245	SR296	Sycamore	Champaign	19	49	1.9	162	3.0	125	105.7
97	SR559	Bennett	SR245	Champaign	10	115	3.0	87	2.9	130	111.1
98	State	SR273	HAR CL	Logan	4	202	3.4	66	5.7	36	111.4
98	SR560	US36	CR25 (Hanna)	Champaign	13	88	2.9	92	2.5	162	111.4
100	Sandusky	SR29	SR161	Champaign	28	20	1.7	181	2.4	167	112.4
101	US36	CR18/CR19 (Springfield)	CR26 (Heck Hill)	Champaign	19	49	2.2	137	2.3	174	112.9
102	US33	SR708	TR95	Logan	19	49	1.0	233	4.0	80	113.5
102	SR274	SR235	US33	Logan	20	43	1.0	233	3.8	88	113.5
102	Troy	CR11	Patterson	Logan	11	103	6.9	15	1.0	226	113.5
105	SR245	LOG CL	LOG CL	Champaign	2	238	60.3	1	4.2	63	114.4
106	CR1	CR5	Gunntown	Logan	15	78	2.2	137	2.7	143	115.2
107	SR4	SR54	SR56	Champaign	24	28	1.5	199	2.6	149	115.6
108	SR287	SR347	UNI CL	Logan	10	115	1.8	172	4.2	63	116.5
109	SR292	US33	CR296	Logan	8	138	2.6	108	3.4	101	117.9
110	US33	CR10	SR292	Logan	36	15	0.6	262	3.1	112	118.2
111	SR187	MAD CL	SR29	Champaign	6	172	3.8	53	3.1	112	118.3
112	Main	SR4 (Sandusky)	SR187	Champaign	19	49	2.5	117	1.7	215	119.2
113	CR130	US33 s. ramps	CR91	Logan	23	33	1.8	172	2.1	184	120.0
114	SR4	SR56	CR183 (Catawba Mechanicsburg)	Champaign	17	65	1.4	207	3.2	107	120.2
115	Sycamore	SR245	LOG CL	Champaign	8	138	7.6	10	1.8	207	120.3
116	CR18	TR216	CR11	Logan	6	172	3.4	66	3.1	112	122.2
117	US33	SR274	CR130	Logan	17	65	1.3	217	3.2	107	123.2
117	SR235	SR706	SR508	Logan	17	65	1.3	217	3.2	107	123.2
117	Miami	SR508	SR47	Logan	17	65	1.9	162	2.5	162	123.2
120	Main	SR235	TR30	Logan	10	115	5.0	34	1.0	226	124.0
121	US33	AUG CL	SR366	Logan	18	57	1.8	172	2.4	167	124.5
121	SR508	TR30	CR18	Logan	15	78	2.2	137	2.3	174	124.5
121	TR56	TR218	Florence	Logan	7	153	7.1	13	1.9	198	124.5
124	East Lawn	Childrens Home	SR296	Champaign	10	115	2.2	137	2.9	130	126.1
125	Urbana Woodstock	SR296	CR157 (Perry)	Champaign	7	153	2.4	127	3.7	91	126.6
126	US36	SR560	Edgewood	Champaign	30	18	1.6	192	1.8	207	126.9
127	SR347	US33 nw. ramp	CR154	Logan	16	71	1.4	207	3.0	125	128.0
128	Milford (SR161)	SR29	CR10 (Parkview)	Champaign	8	138	1.7	181	4.2	63	128.4
129	SR245	CR33 (Calland)	TR34 (Church)	Champaign	5	185	7.6	10	2.3	174	129.2
130	CR130	CR91	CR13	Logan	9	129	1.4	207	4.5	56	130.5
131	TR218	CR130	TR56	Logan	5	185	6.7	16	2.3	174	131.0
132	US33	SR366	CR87	Logan	11	103	1.3	217	3.9	83	131.2
133	TR185	CR1	TR179	Logan	9	129	3.8	53	1.7	215	132.0
134	CR29	CR1	TR179	Logan	9	129	3.7	55	1.7	215	132.6
135	US68	CLA CL	CR468 (Springfield-Urbana)	Champaign	19	49	0.8	252	3.0	125	132.7
135	SR273	TR1328	SR117	Logan	4	202	5.7	24	2.6	149	132.7
137	County Line	CR15 (Valley)	CR468 (Springfield-Urbana)	Champaign	15	78	1.5	199	2.7	143	133.8
138	US36	MIA CL	SR235	Champaign	13	88	1.5	199	2.9	130	133.9
139	SR29	SHE CL	SR235	Champaign	8	138	1.9	162	3.4	101	134.1
140	SR47	SR235	TR46	Logan	18	57	1.0	233	2.8	140	134.7
141	SR273	CR104	SR638	Logan	6	172	2.6	108	3.1	112	134.8
142	SR347	SR287	CR152	Logan	7	153	2.0	155	3.7	91	135.0
143	CR10	SR292	CR154	Logan	3	226	4.8	37	3.1	112	135.1
144	SR540	CR25	CR5	Logan	5	185	2.6	108	3.5	96	135.2
145	SR29	TR222 (Ludlow)	SR56	Champaign	13	88	1.0	233	3.4	101	135.4
146	Runkle	CR22 (Kite)	US36	Champaign	4	202	2.1	149	5.7	36	136.3
147	CR142	CR10	SR47	Logan	10	115	1.8	172	2.9	130	136.6
147	US36	MIA CL	SR235	Champaign	2	238	2.2	137	61.9	1	136.6
149	Ludlow	SR296	TR219 (Sibley)	Champaign	7	153	1.5	199	4.6	54	137.1
150	Buckeye	SR638	US68	Logan	6	172	2.5	117	3.1	112	137.5
151	CR9	TR219	CR25	Logan	8	138	3.3	76	1.8	207	140.1
152	Eastern	Organ	TR179	Logan	8	138	3.5	62	1.0	226	141.6
153	SR292	CR20	HAR CL	Logan	10	115	1.2	223	3.5	96	141.7
154	US33	SR540	CR10	Logan	42	9	0.7	256	1.8	207	142.5
155	SR560	CR25 (Hanna)	SR29	Champaign	7	153	1.7	181	3.7	91	142.8
156	SR235	SR708	SR720	Logan	8	138	1.6	192	3.4	101	143.1
157	Heck Hill	US36	CR25 (Ward)	Champaign	8	138	3.0	87	1.8	207	143.4
158	Columbus	CR5	SR292	Logan	6	172	2.2	137	3.1	112	143.5
159	Dugan	CR9 (Short Cut)	SR29	Champaign	9	129	2.9	92	1.7	215	143.7
160	SR287	CR153	SR347	Logan	5	185	2.2	137	3.5	96	143.9
161	Charles	SR273	CR102	Logan	1	251	2.4	127	7.3	22	145.1
162	TR179	CR29	TR185	Logan	7	153	3.6	57	1.0	226	146.1
163	CR91	CR130	TR33	Logan	7	153	3.0	87	1.9	198	146.7
164	SR161	CR10 (Parkview)	SR4	Champaign	11	103	2.3	133	1.6	219	146.8
165	Kiser Lake	US36	CR25 (Ward)	Champaign	8	138	3.2	83	1.0	226	147.9
165	US33	CR87	SR235	Logan	12	96	1.7	181	2.1	184	147.9
167	SR274	SHE CL	SR235	Logan	24	28	1.0	233	1.5	223	148.0
168	SR55	SR235	TR22 (N Hampton Donnellsville)	Champaign	9	129	2.0	155	2.4	167	148.2
169	Parkview	Main (SR29)	SR161	Champaign	4	202	1.9	162	4.2	63	148.3
169	SR292	CR296	TR170	Logan	6	172	4.7	39	1.0	226	148.3
171	US33	SR292	SR347	Logan	45	8	0.5	265	1.6	219	148.4
172	SR4	SR161	UNI CL	Champaign	8	138	1.9	162	2.6	149	148.5
173	CR5	SR540	SR47	Logan	6	172	3.2	83	2.1	184	148.9
174	CR10	CR154	CR142	Logan	5	185	3.3	76	2.3	174	149.0
175	SR29	Harris	SR560	Champaign	7	153	2.8	96	1.9	198	149.4
176	CR5	CR1	CR29	Logan	11	103	2.1	149	1.6	219	151.6
177	US33	SR347	UNI CL	Logan	39	11	0.4	269	1.5	223	152.0
177	CR10	US33 e. ramps	CR5	Logan	5	185	5.0	34	1.0	226	152.0
179	Kite	Runkle	US36	Champaign	4	202	7.5	12	1.0	226	152.2
180	SR273	SR117	CR104	Logan	8	138	2.5	117	1.8	207	152.4
181	SR29	CR25 (Hanna)	CR16 (Millerstown)	Champaign	10	115	1.7	181	2.3	174	152.5



Hazard Index Rank	Roadway Section	From	To	County	Frequency	Frequency Rank	Crash Rate	Crash Rate Rank	EPDO Rate	EPDO Rate Rank	Hazard Index
182	SR29	SR56	CR10 (Park)	Champaign	12	96	1.0	233	2.6	149	153.0
182	SR161	CR10 (Park)	SR4 (Sandusky)	Champaign	7	153	2.6	108	1.9	198	153.0
184	Middleburg	UNI CL	UNI CL	Champaign	4	202	2.9	92	2.6	149	153.1
185	Carysville	SR235	CR19 (Kiser Lake)	Champaign	1	251	2.0	155	7.3	22	153.5
186	Charles	CR102	HAR CL	Logan	1	251	1.9	162	7.3	22	155.6
187	Urbana Woodstock	CR157 (Perry)	SR559 (Main)	Champaign	7	153	2.5	117	1.9	198	155.7
188	SR245	TR34 (Church)	LOG CL	Champaign	3	226	2.6	108	3.1	112	156.4
189	SR29	SR187	MAD CL	Champaign	6	172	1.1	230	4.2	63	156.7
189	Hanna	SR560	SR29	Champaign	4	202	2.7	104	2.6	149	156.7
191	SR235	US36	CR63 (Possum Hollow)	Champaign	13	88	0.9	245	2.5	162	157.3
191	Detroit	SR245	SR508	Logan	13	88	0.9	245	2.5	162	157.3
193	SR508	CR18	US68	Logan	7	153	1.7	181	2.8	140	157.5
194	Baird	Taylor	US68	Logan	1	251	1.8	172	7.3	22	158.6
195	SR235	CR63 (Possum Hollow)	SR29	Champaign	11	103	0.8	252	2.7	143	159.7
196	Sandusky	Bellefontaine	CR25	Logan	2	238	2.0	155	4.2	63	160.6
196	SR540	CR5	SR292	Logan	4	202	2.5	117	2.6	149	160.6
196	US33	TR95	SR274	Logan	13	88	0.7	256	2.5	162	160.6
196	SR235	SR274	SR708	Logan	4	202	1.1	230	5.7	36	160.6
200	SR235	CR193 (Old Troy)	CR17 (Runkle)	Champaign	4	202	0.5	265	34.6	2	160.9
201	CR17	SR720	AUG CL	Logan	6	172	2.4	127	2.1	184	162.1
202	SR55	CR85 (Storms Creek)	SR560	Champaign	5	185	1.5	199	3.5	96	162.5
203	SR235	CLA CL	SR55	Champaign	5	185	0.9	245	4.8	51	162.8
204	SR4	CLA CL	SR54	Champaign	10	115	1.3	217	2.3	174	163.3
205	US68	CR14 (Upper Valley)	LOG CL	Champaign	13	88	1.0	233	2.0	196	163.9
206	Norwood (SR29)	CR16 (Millerstown)	Light	Champaign	7	153	2.5	117	1.0	226	164.1
207	Brush Lake	CR2 (Urbana Woodstock)	SR296	Champaign	5	185	1.4	207	3.5	96	164.9
208	SR287	SR559	CR153	Logan	7	153	2.1	149	1.9	198	165.3
209	SR47	SR292	UNI CL	Logan	4	202	1.2	223	4.2	63	166.6
209	SR559	CHP CL	SR287	Logan	4	202	1.2	223	4.2	63	166.6
211	SR245	SR29	TR39 (Cemetery)	Champaign	4	202	3.4	66	1.0	226	168.4
212	US68	SR273	HAR CL	Logan	4	202	1.0	233	4.2	63	169.6
213	SR296	US68	SR814	Champaign	12	96	1.3	217	1.5	223	170.4
214	County Line	CR92 (Urbana Moorefield)	CLA CL	Champaign	5	185	2.1	149	2.3	174	170.9
215	SR540	TR230	CR25	Logan	3	226	1.2	223	5.2	47	171.4
216	Kite	SR55	Runkle	Champaign	4	202	2.0	155	2.6	149	172.0
216	Millerstown	SR560	SR29	Champaign	4	202	2.0	155	2.6	149	172.0
218	SR235	TR215	SR274	Logan	7	153	1.0	233	2.8	140	173.1
219	CR28	US33 s. ramps	CR153	Logan	1	251	6.0	22	1.0	226	174.8
220	CR29	TR179	CR5	Logan	8	138	1.6	192	1.8	207	174.9
221	SR366	SR368	SR117	Logan	9	129	0.9	245	2.4	167	175.2
222	Childrens Home	East Lawn	Edinger	Champaign	3	226	3.6	57	1.0	226	175.3
223	CR32	CR11	SR47	Logan	7	153	2.0	155	1.0	226	175.5
224	SR54	SR4	CR97 (Prairie)	Champaign	3	226	1.8	172	3.1	112	175.6
225	CR9	SR47	TR219	Logan	4	202	1.8	172	2.6	149	177.1
226	Water	CR5	MR379	Logan	1	251	5.1	31	1.0	226	177.5
227	SR29	SR235	SR245	Champaign	6	172	2.2	137	1.0	226	177.7
228	SR245	Sycamore	UNI CL	Champaign	7	153	1.6	192	1.9	198	178.2
229	Orchard Island	SR235	Kress	Logan	6	172	1.7	181	2.1	184	178.3
230	CR39	SR274	TR100	Logan	2	238	1.3	217	4.2	63	179.2
231	SR368	TR1239	TR1284	Logan	4	202	1.7	181	2.6	149	179.8
232	CR70	SHE CL	SR235	Logan	4	202	2.6	108	1.0	226	181.0
233	SR56	SR29	SR4	Champaign	5	185	1.6	192	2.3	174	183.8
234	SR273	US68	SR274	Logan	2	238	1.0	233	4.2	63	184.0
235	SR235	CR17 (Runkle)	US36	Champaign	3	226	0.4	269	5.2	47	185.2
236	SR706	SHE CL	SR235	Logan	1	251	0.6	262	7.3	22	185.6
237	SR274	US33	SR117	Logan	3	226	2.9	92	1.0	226	185.8
238	CR9	CR25	SR274	Logan	5	185	1.5	199	2.3	174	185.9
239	Prairie	TR117 (County Line)	SR54	Champaign	1	251	0.5	265	7.3	22	186.5
240	SR235	CHP CL	SR706	Logan	1	251	0.4	269	7.3	22	187.7
241	Bellefontaine	CR10	Sandusky	Logan	1	251	3.0	87	1.0	226	194.3
242	SR56	CR182 (Catawba Mechanicsburg)	CLA CL	Champaign	2	238	2.6	108	1.0	226	195.4
243	CR32	SR47	CR130	Logan	7	153	1.2	223	1.0	226	195.9
244	TR143	UNI CL	SR347	Logan	1	251	2.8	96	1.0	226	197.0
245	CR5	CR25	SR540	Logan	4	202	1.9	162	1.0	226	197.2
246	US36	SR559	UNI CL	Champaign	3	226	0.9	245	3.1	112	197.5
247	Sante Fe	CR54	CR83	Logan	2	238	2.5	117	1.0	226	198.1
248	SR287	TR177	SR559	Logan	4	202	0.9	245	2.6	149	199.0
249	Runkle	Bradley	Baird	Logan	1	251	2.6	108	1.0	226	200.6
250	Ward	CR19 (Kiser Lake)	CR26 (Heck Hill)	Champaign	3	226	2.1	149	1.0	226	202.9
251	SR54	MIA CL	Lincoln	Champaign	2	238	2.2	137	1.0	226	204.1
252	Childrens Home	TR101 (Dugan)	Edinger	Champaign	3	226	1.9	162	1.0	226	206.8
253	SR47	TR46	CR32	Logan	7	153	0.6	262	1.0	226	207.6
254	SR287	TR150	TR177	Logan	1	251	2.2	137	1.0	226	209.3
255	Sandusky	CR9	SR273	Logan	5	185	1.0	233	1.0	226	211.7
256	SR559	SR161	US36	Champaign	4	202	1.2	223	1.0	226	215.5
257	CR104	SR273	HAR CL	Logan	1	251	1.9	162	1.0	226	216.8
258	SR245	LOG CL	TR217 (Metz)	Champaign	2	238	1.7	181	1.0	226	217.3
259	SR274	US68	CR9	Logan	2	238	1.4	207	1.0	226	225.1
259	SR55	TR22 (N Hampton Donnellsville)	CR85 (Storms Creek)	Champaign	3	226	1.2	223	1.0	226	225.1
261	SR245	TR195	Runkle	Logan	1	251	1.6	192	1.0	226	225.8
262	Possum Hollow	SR235	CR19 (Kiser Lake)	Champaign	1	251	1.5	199	1.0	226	227.9
263	Upper Valley	CR45 (Sullivan)	US68	Champaign	1	251	1.4	207	1.0	226	230.3
264	Urbana Moorefield	CR92 (Hickory Grove)	TR117 (County Line)	Champaign	3	226	0.7	256	1.0	226	235.0
265	SR29	SR245	Harris	Champaign	2	238	0.9	245	1.0	226	236.5
266	CR5	SR274	CR50	Logan	1	251	1.1	230	1.0	226	237.2
267	SR368	SR366	TR1239	Logan	2	238	0.8	252	1.0	226	238.6
268	Detroit	CHP CL	SR245	Logan	2	238	0.4	269	1.0	226	243.7
269	Parkview	US36	CR216 (Urbana Woodstock)	Champaign	1	251	0.8	252	1.0	226	243.8
270	SR54	CLA CL	SR4	Champaign	1	251	0.7	256	1.0	226	245.0
270	CR91	TR33	SR235	Logan	1	251	0.7	256	1.0	226	245.0
272	Millerstown-Eris	CR26 (Heck Hill)	SR560	Champaign	1	251	0.5	265	1.0	226	247.7



Hazard Index Rank	Roadway Section	From	To	County	Frequency	Frequency Rank	Crash Rate	Crash Rate Rank	EPDO Rate	EPDO Rate Rank	Hazard Index
273	SR55	CR92 (Hickory Grove)	CR193 (Old Troy)	Champaign	0	273	0.0	273	0.0	273	273.0
273	SR245	TR39 (Cemetery)	CR33 (Calland)	Champaign	0	273	0.0	273	0.0	273	273.0
273	Upper Valley	SR296	CR45 (Sullivan)	Champaign	0	273	0.0	273	0.0	273	273.0
273	CR10	CR142	UNI CL	Logan	0	273	0.0	273	0.0	273	273.0
273	CR39	CR97	CR259	Logan	0	273	0.0	273	0.0	273	273.0
273	CR50	CR5	CR12	Logan	0	273	0.0	273	0.0	273	273.0
273	TR179	TR185	CR10	Logan	0	273	0.0	273	0.0	273	273.0
273	SR245	CHP CL	TR195	Logan	0	273	0.0	273	0.0	273	273.0
273	SR245	CHP CL	CHP CL	Logan	0	273	0.0	273	0.0	273	273.0
273	SR273	SR274	HAR CL	Logan	0	273	0.0	273	0.0	273	273.0
273	SR368	TR1284	End SR368	Logan	0	273	0.0	273	0.0	273	273.0
273	Sandusky	MR380	CR5	Logan	0	273	0.0	273	0.0	273	273.0

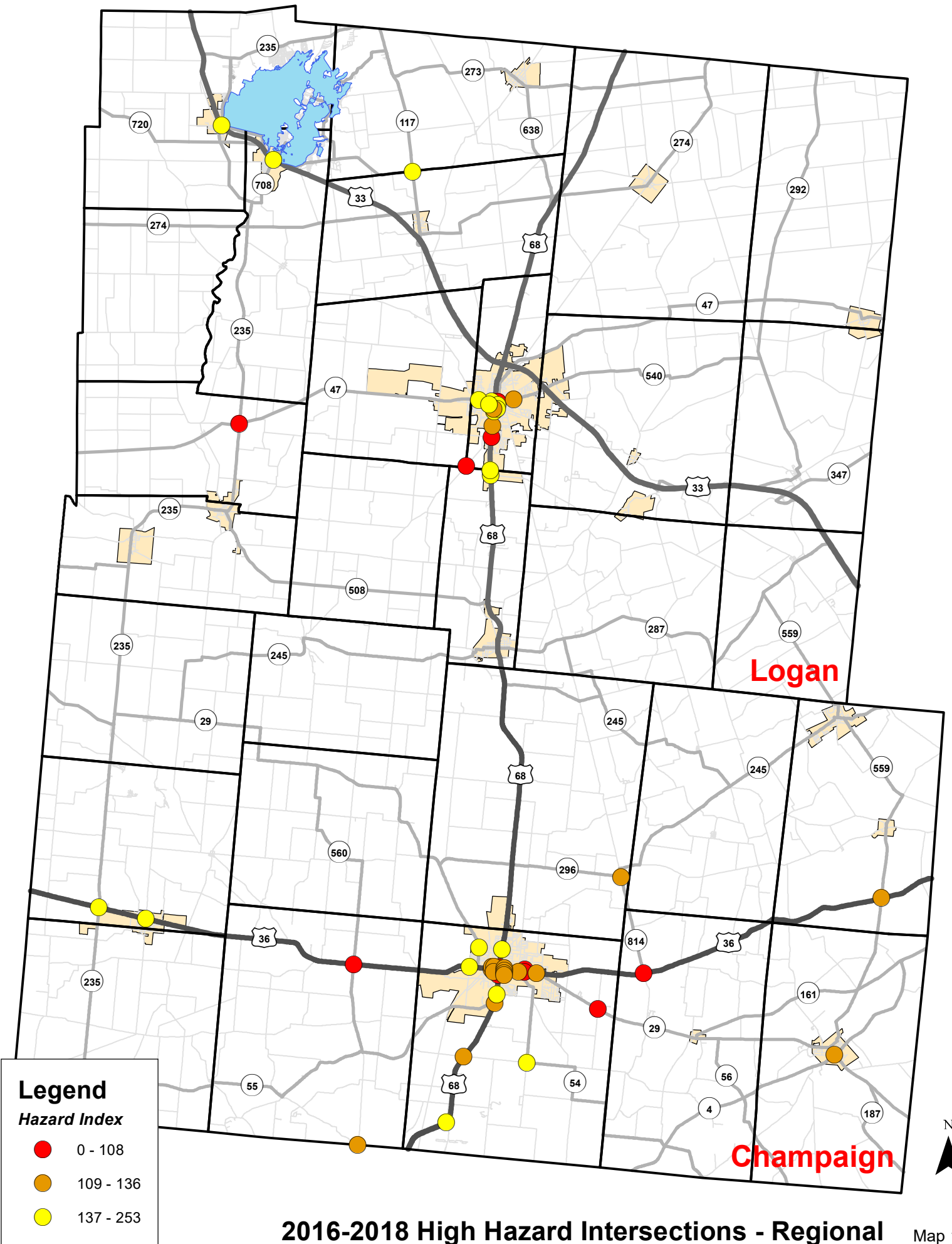


Hazard Index Rank	Roadway Section	From	To	County	Frequency	Frequency Rank	Crash Rate	Crash Rate Rank	EPDO Rate	EPDO Rate Rank	Hazard Index
1	Main	Auburn	Columbus	Logan	57	8	20.8	20	4.1	18	14.6
2	Jefferson	Water	US36	Champaign	37	17	44.9	6	3.0	36	19.4
3	Jefferson	Scioto	Washington	Champaign	40	15	20.5	21	3.0	36	23.1
4	Detroit	Auburn	Sandusky	Logan	27	24	18.7	25	3.6	23	24.0
5	Court	East Lawn	Jefferson	Champaign	10	54	56.9	3	4.8	10	25.5
6	Scioto	Jefferson	SR29A	Champaign	107	2	11.6	42	2.6	48	27.8
7	East Lawn	US36	Washington	Champaign	21	28	16.5	29	3.1	29	28.6
8	Main	Water	Court	Champaign	122	1	40.8	8	1.9	88	29.2
9	Court	Main	Kenton	Champaign	14	41	57.2	2	2.8	42	29.6
10	Madriver	Auburn	Sandusky	Logan	49	11	36.3	10	2.2	76	30.2
11	Sandusky	Detroit	Madriver	Logan	73	6	26.7	12	1.9	88	32.4
12	Columbus	CR508	Madriver	Logan	37	17	86.5	1	2.0	86	32.9
13	Kenton	Water	Court	Champaign	9	59	48.0	4	3.1	29	33.5
14	Sante Fe	TR239	US33	Logan	10	54	16.9	28	4.2	12	33.6
15	SR235	TR1080	TR260	Logan	18	34	10.5	44	3.5	24	34.0
16	Scioto	East Lawn	Jefferson	Champaign	28	22	10.7	43	2.8	42	34.3
17	Miami	Russell	Kenton	Champaign	107	2	18.6	26	1.9	88	35.0
18	Main	Columbus	SR47	Logan	56	9	42.7	7	1.5	100	35.7
19	High	SR55	Powell	Champaign	9	59	19.4	23	3.8	21	36.8
20	Commercial	Phoenix	US68	Champaign	20	30	13.4	38	2.6	48	37.8
21	Columbus	Madriver	CR507	Logan	16	37	16.5	29	2.6	48	37.9
21	Main	Washington	Auburn	Logan	86	4	9.6	45	2.2	76	37.9
23	Washington	Main	Wood	Champaign	13	43	14.9	35	2.9	39	39.4
24	SR235	SR720	CR82	Logan	11	49	8.7	56	4.4	11	39.7
25	Madriver	Sandusky	Williams	Logan	20	30	18.0	27	2.3	66	39.9
26	Sandusky	Shortridge	Newford	Logan	30	21	9.2	50	2.5	59	41.1
27	Chillicothe	Madriver	Ludlow	Logan	15	40	21.5	18	2.3	66	41.2
28	Main	Court	Washington	Champaign	28	22	9.4	48	2.4	62	41.8
29	Troy	Patterson	Garfield	Logan	18	34	16.1	33	2.4	62	42.1
30	Miami	Edgewood	Oakland	Champaign	16	37	9.6	45	2.6	48	42.7
31	Market	Main	Kenton	Champaign	7	75	46.3	5	2.8	42	44.1
32	Scioto	Kenton	East Lawn	Champaign	42	13	6.6	71	2.5	59	44.2
33	Sandusky	Garfield	Detroit	Logan	20	30	5.4	85	3.5	24	44.7
34	Main	Washington	Bloomfield	Champaign	24	25	4.2	101	3.9	19	46.0
35	Main	SR55	Powell	Champaign	22	27	5.4	85	3.0	36	47.1
35	Court	Kenton	East Lawn	Champaign	10	54	21.2	19	2.3	66	47.1
37	Washington	Wood	East Lawn	Champaign	12	47	22.4	17	2.1	79	47.6
38	TR217	TR56	US68	Logan	10	54	9.1	51	2.9	39	48.6
39	Sandusky	Madriver	Hayes	Logan	35	19	6.6	71	2.3	66	48.7
39	Main	Powell	Water	Champaign	64	7	7.0	67	2.0	86	48.7
41	Main	Reynolds	US33 n. ramps	Logan	45	12	8.9	53	1.8	94	48.9
42	Main	Lake	Washington	Logan	38	16	5.5	84	2.5	59	49.3
42	Madriver	Williams	Rush	Logan	8	67	9.4	48	3.4	27	49.3
44	Main	Gunntown	Clarkson	Logan	76	5	7.9	62	1.7	96	49.4
45	Washington	US68	CR1	Logan	14	41	18.8	24	1.9	88	50.0
46	Auburn	Detroit	Madriver	Logan	16	37	23.1	16	1.4	104	50.8
47	Main	Clarkson	Lake	Logan	54	10	4.4	99	2.3	66	53.5
47	East Lawn	Washington	Boyce	Champaign	11	49	15.4	34	2.1	79	53.5
49	Scioto	Community	Lippincott	Champaign	11	49	4.7	95	3.9	19	53.8
50	Oakland	Light	Gwynne	Champaign	7	75	6.0	78	18.4	2	54.0
51	Gunntown	US68	CR1	Logan	23	26	7.0	67	2.1	79	54.2
52	SR235	TR281	TR1080	Logan	11	49	2.8	115	13.2	4	55.3
53	Water	Main	Kenton	Champaign	13	43	16.3	31	1.5	100	56.5
54	Boyce	Wood	East Lawn	Champaign	5	88	37.6	9	2.3	66	57.7
55	Main	Rush	Reynolds	Logan	19	33	4.1	103	2.7	47	58.2
56	Sante Fe	SR235	TR239	Logan	6	82	6.4	73	4.2	12	58.3
57	Dowell	CR507	SR47	Logan	2	128	25.4	13	4.2	12	58.7
58	Hayes	CR504	SR540	Logan	13	43	13.1	39	1.5	100	58.9
59	Scioto	Lippincott	Dugan	Champaign	9	59	4.8	91	3.1	29	59.6
60	Miami	Oakland	Russell	Champaign	21	28	4.9	90	2.2	76	61.0
61	Detroit	Auburn	Maple	Logan	9	59	7.7	63	2.4	62	61.1
62	CR11	CR32	TR216	Logan	9	59	2.4	125	15.9	3	62.0
63	Light	Oakland	Russell	Champaign	7	75	7.6	65	2.8	42	62.1
64	Detroit	SR47	Powell	Logan	8	67	25.0	14	1.0	105	62.5
65	Main	Sandusky	Rush	Logan	34	20	5.7	83	1.6	99	62.6
66	Orchard Island	Kress	Elliott	Logan	9	59	6.1	76	2.4	62	65.0
67	Oakland	New Haven	TR101 (Dugan)	Champaign	9	59	3.1	112	3.1	29	65.9
68	Russell	Scioto	Gwynne	Champaign	5	88	14.1	37	2.3	66	66.1
69	Sandusky	Columbus	Troy	Logan	10	54	2.9	114	2.9	39	67.5
70	SR235	TR1242	HAR CL	Logan	3	113	6.7	70	5.2	6	68.0
71	Russell	Gwynne	Light	Champaign	7	75	20.2	22	1.0	105	68.1
72	Washington	East Lawn	Jefferson	Champaign	7	75	11.9	41	1.9	88	68.7
73	SR235	SR365	SR366	Logan	7	75	2.8	115	3.7	22	71.1
73	Lake	CR508	US68	Logan	4	102	8.9	53	2.6	48	71.1
75	SR235	TR88	TR281	Logan	8	67	2.6	121	3.4	27	71.2
76	Gwynne	Russell	Main	Champaign	5	88	8.4	57	2.3	66	72.1
76	SR235	TR260	TR1220	Logan	6	82	2.4	125	5.2	6	72.1
78	High	College	Market	Champaign	3	113	8.1	61	3.1	29	72.2
79	TR293	Begin TR293	TR1304	Logan	3	113	7.7	63	3.1	29	72.8
80	Rush	Main	Blair	Logan	4	102	4.5	96	4.2	12	73.2
81	US33	US68	SR540	Logan	42	13	1.4	140	1.9	88	73.6
82	Eastern	Columbus	Organ	Logan	3	113	4.8	91	5.2	6	74.3
83	Sandusky	Troy	Garfield	Logan	11	49	6.0	78	1.0	105	74.5
84	CR1	Gunntown	TR181	Logan	5	88	3.1	112	3.5	24	76.0
85	CR1	Washington	Eastern	Logan	13	43	4.4	99	1.5	100	76.9
86	High	Powell	College	Champaign	4	102	6.2	74	2.6	48	77.4
87	Court	Russell	Main	Champaign	5	88	14.2	36	1.0	105	77.5
88	Oakland	US36	New Haven	Champaign	18	34	2.7	118	1.7	96	77.8
89	Garfield	Williams	Troy	Logan	3	113	3.6	105	5.2	6	78.5



Hazard Index Rank	Roadway Section	From	To	County	Frequency	Frequency Rank	Crash Rate	Crash Rate Rank	EPDO Rate	EPDO Rate Rank	Hazard Index
90	East Lawn	Boyce	Bloomfield	Champaign	4	102	6.0	78	2.6	48	78.6
91	Orchard Island	Elliott	US33	Logan	5	88	12.9	40	1.0	105	78.7
92	Market	High	Main	Champaign	3	113	31.8	11	1.0	105	80.0
93	TR185	Harding	Ludlow	Logan	8	67	6.2	74	1.0	105	80.5
94	SR366	SR708	TR94	Logan	8	67	1.9	132	2.6	48	80.8
95	Ludlow	Lake	Washington	Logan	9	59	4.5	96	1.7	96	81.2
95	Grove	Detroit	US68	Logan	3	113	23.6	15	1.0	105	81.2
97	Water	Kenton	Jefferson	Champaign	7	75	2.3	129	2.8	42	81.3
98	Columbus	Plum Valley	CR508	Logan	4	102	16.2	32	1.0	105	81.9
99	Gwynne	Oakland	Russell	Champaign	6	82	5.4	85	2.1	79	82.0
100	Main	Bloomfield	Dellinger	Champaign	12	47	1.9	132	2.1	79	82.1
101	Lake	Main	Harding	Logan	5	88	4.8	91	2.3	66	82.3
102	Garfield	Troy	SR47	Logan	8	67	5.8	82	1.0	105	82.9
103	Sandusky	Hayes	Shoctrudge	Logan	6	82	1.5	139	3.1	29	83.2
104	CR1	TR181	TR185	Logan	6	82	4.8	91	2.1	79	83.8
105	Sandusky	CR32	Columbus	Logan	4	102	1.2	143	33.0	1	84.0
106	Light	Russell	Main	Champaign	2	128	3.6	105	4.2	12	86.3
107	Sloan	TR55	SR540	Logan	5	88	7.2	66	1.0	105	86.5
108	Scioto	SR29A	Community	Champaign	8	67	3.4	107	1.8	94	87.1
109	Hayes	CR10	CR504	Logan	4	102	8.2	58	1.0	105	89.7
110	Edgewood	James	US36	Champaign	5	88	2.7	118	2.3	66	90.4
111	SR235	Stephenson	TR1051	Logan	4	102	2.7	118	2.6	48	90.6
112	Columbus	Troy	Plum Valley	Logan	3	113	9.5	47	1.0	105	90.8
113	SR366	Center	SR708	Logan	5	88	5.9	81	1.0	105	91.0
114	Commercial	Edgewood	Phoenix	Champaign	8	67	3.2	111	1.0	105	91.6
115	Kenton	Henry	Water	Champaign	3	113	8.8	55	1.0	105	93.2
116	Detroit	Maple	CR11	Logan	5	88	5.2	89	1.0	105	93.4
117	High	Market	Court	Champaign	3	113	8.2	58	1.0	105	94.1
118	SR366	SR235	TR1109	Logan	2	128	1.3	141	7.3	5	95.0
119	SR366	US33	SR235	Logan	2	128	1.8	135	4.2	12	95.3
120	SR235	TR87	SR365	Logan	6	82	2.1	130	2.1	79	95.5
121	SR235	TR293	TR251	Logan	4	102	1.7	137	2.6	48	96.3
122	SR235	TR1051	TR87	Logan	4	102	1.6	138	2.6	48	96.6
123	Oakland	Gwynne	Miami	Champaign	5	88	4.2	101	1.0	105	97.0
124	SR235	TR251	TR1242	Logan	5	88	3.3	108	1.0	105	99.1
124	Orchard Island	US33	End SR708	Logan	5	88	3.3	108	1.0	105	99.1
126	West	Columbus	SR47	Logan	1	141	9.1	51	1.0	105	103.2
127	TR293	TR1304	SR235	Logan	2	128	6.9	69	1.0	105	103.4
128	Boyce	East Lawn	Jefferson	Champaign	1	141	8.2	58	1.0	105	105.3
129	Kenton	Powell	Henry	Champaign	2	128	6.1	76	1.0	105	105.5
130	Bloomfield	Julia	East Lawn	Champaign	3	113	4.1	103	1.0	105	107.6
131	Rush	Blair	Allison	Logan	4	102	2.6	121	1.0	105	108.6
132	Eastern	Hayes	Columbus	Logan	3	113	3.3	108	1.0	105	109.1
133	Troy	Florence	CR130	Logan	2	128	4.5	96	1.0	105	111.5
134	TR55	Sloan	TR179	Logan	1	141	5.4	85	1.0	105	113.4
135	Edgewood	SR55	James	Champaign	3	113	2.5	123	1.0	105	113.6
136	Hayes	SR540	Dakota	Logan	3	113	2.0	131	1.0	105	116.0
137	Bloomfield	Main	Julia	Champaign	2	128	2.8	115	1.0	105	117.2
138	SR366	TR1109	North	Logan	3	113	1.3	141	1.0	105	119.0
139	CR11	CR18	CR508	Logan	2	128	2.4	125	1.0	105	120.2
139	Dellinger	Main	East Lawn	Champaign	2	128	2.4	125	1.0	105	120.2
141	SR366	North	Center	Logan	2	128	1.9	132	1.0	105	122.3
142	Chillicothe	Chillicothe	Hayes	Logan	2	128	1.8	135	1.0	105	123.2
143	Jefferson	Washington	Boyce	Champaign	1	141	2.5	123	1.0	105	124.8
144	SR366	TR94	TR1261	Logan	2	128	0.8	144	1.0	105	125.9
145	CR11	TR216	CR18	Logan	1	141	0.7	145	1.0	105	131.4
146	SR235	TR1220	TR266	Logan	1	141	0.5	146	1.0	105	131.7
146	SR235	TR266	TR293	Logan	1	141	0.5	146	1.0	105	131.7
148	Main	CR82	Stephenson	Logan	1	141	0.4	148	1.0	105	132.3
149	East Lawn	Bloomfield	Childrens Home	Champaign	0	149	0.0	149	0.0	149	149.0
149	Boyce	Main	Wood	Champaign	0	149	0.0	149	0.0	149	149.0
149	SR273	Begin SR273	TR1328	Logan	0	149	0.0	149	0.0	149	149.0
149	SR365	SR235	End SR365	Logan	0	149	0.0	149	0.0	149	149.0
149	SR366	TR1261	SR368	Logan	0	149	0.0	149	0.0	149	149.0
149	Allison	Dakota	TR246	Logan	0	149	0.0	149	0.0	149	149.0
149	Detroit	Grove	Powell	Logan	0	149	0.0	149	0.0	149	149.0



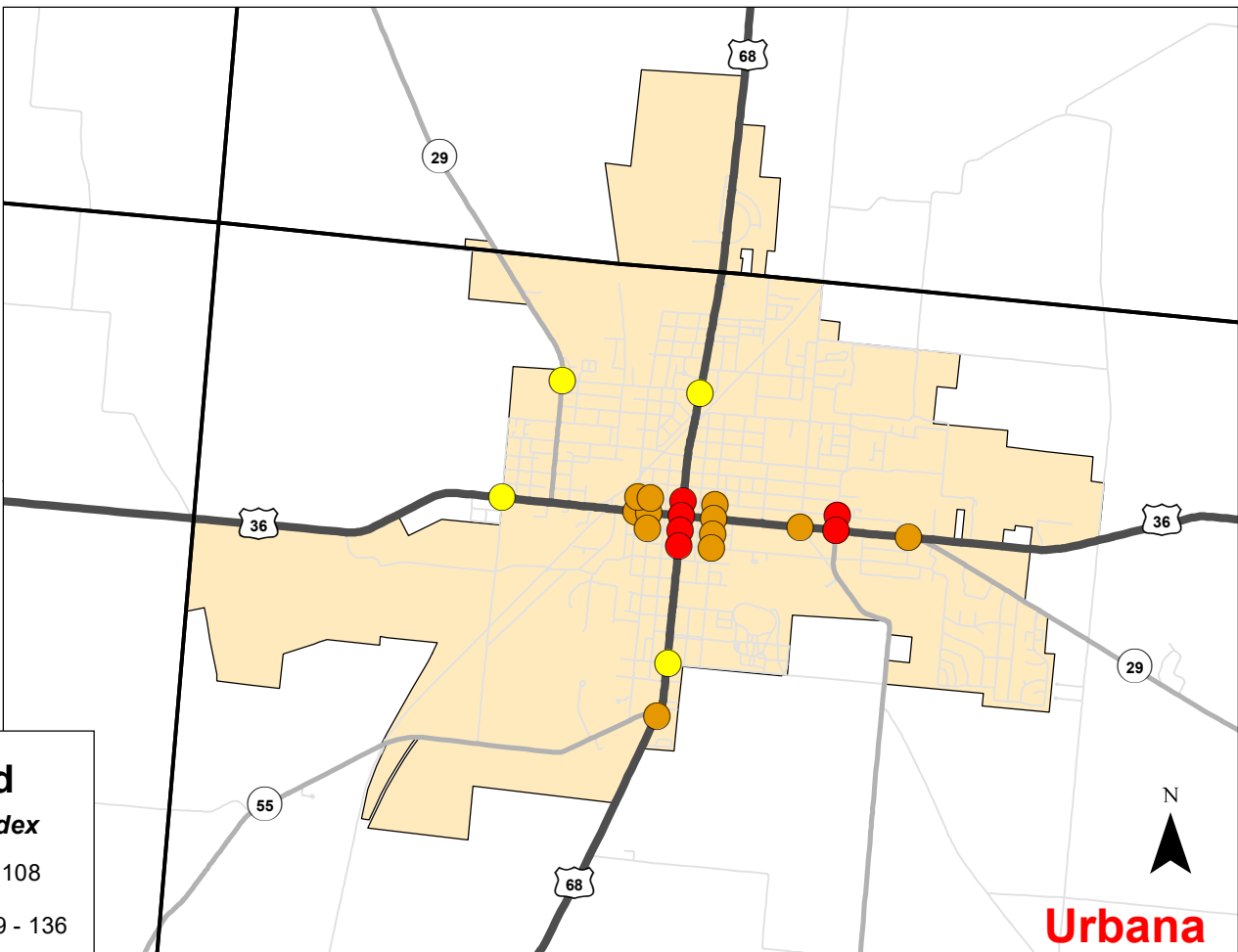
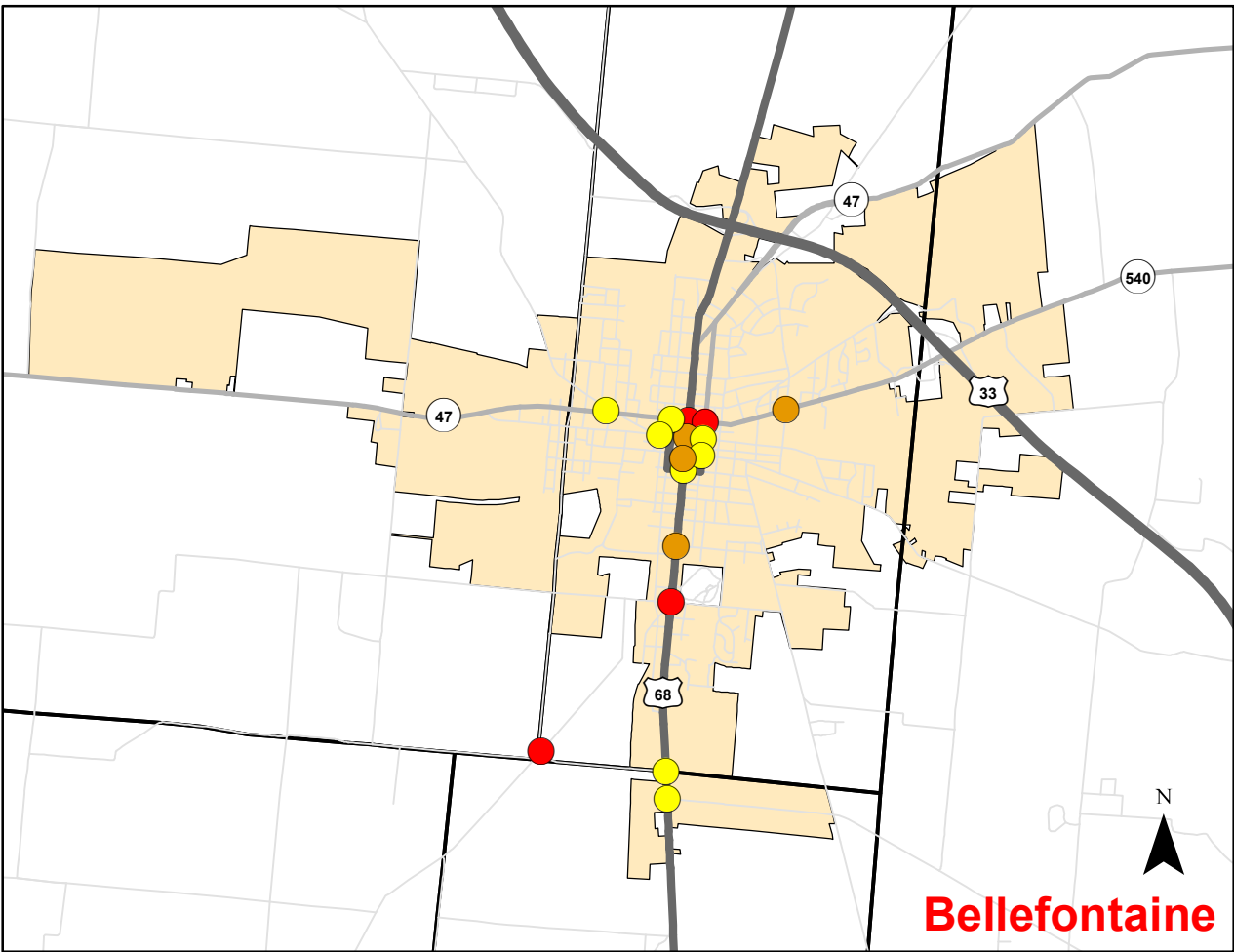


**Legend**

*Hazard Index*

- 0 - 108
- 109 - 136
- 137 - 253

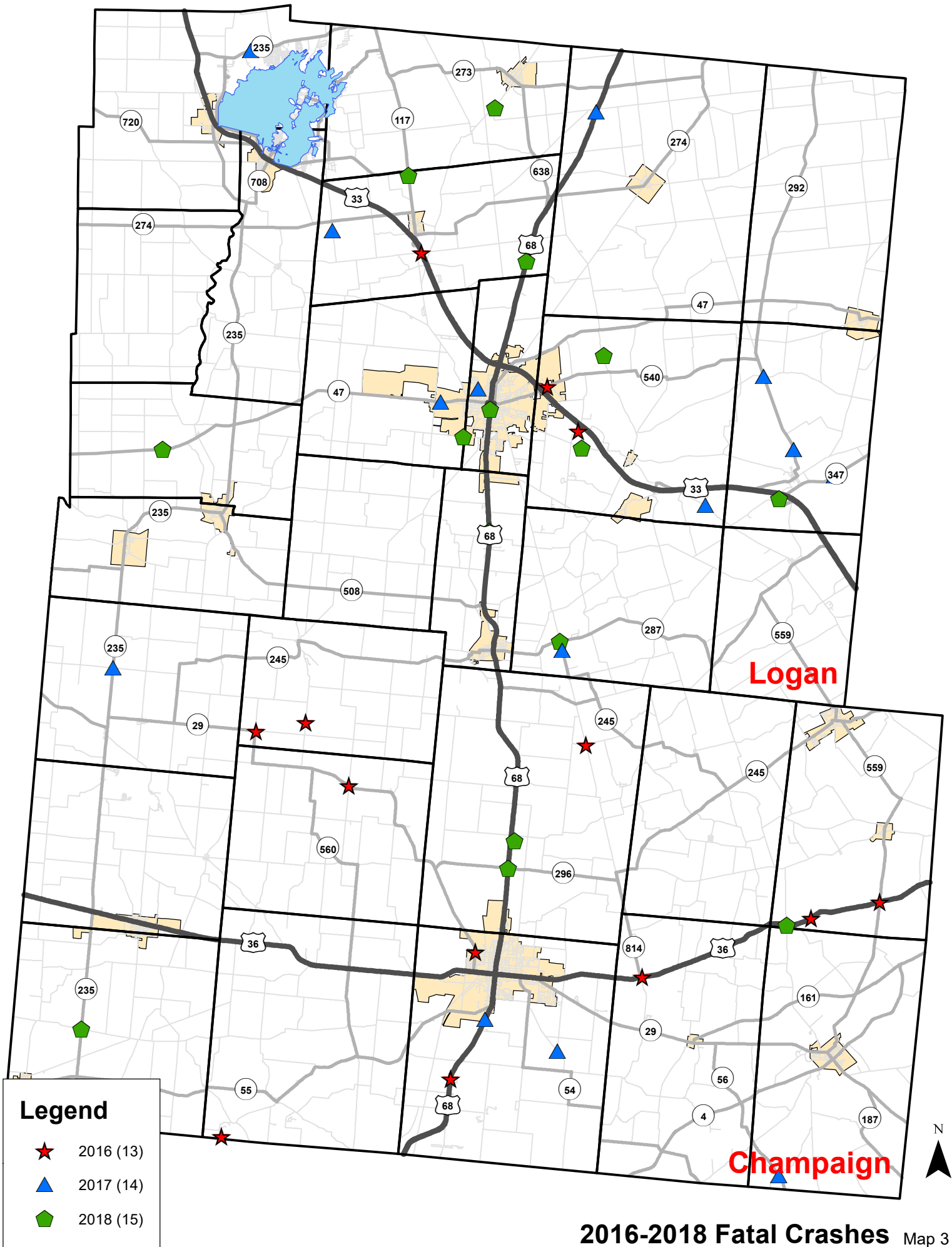
**2016-2018 High Hazard Intersections - Regional**

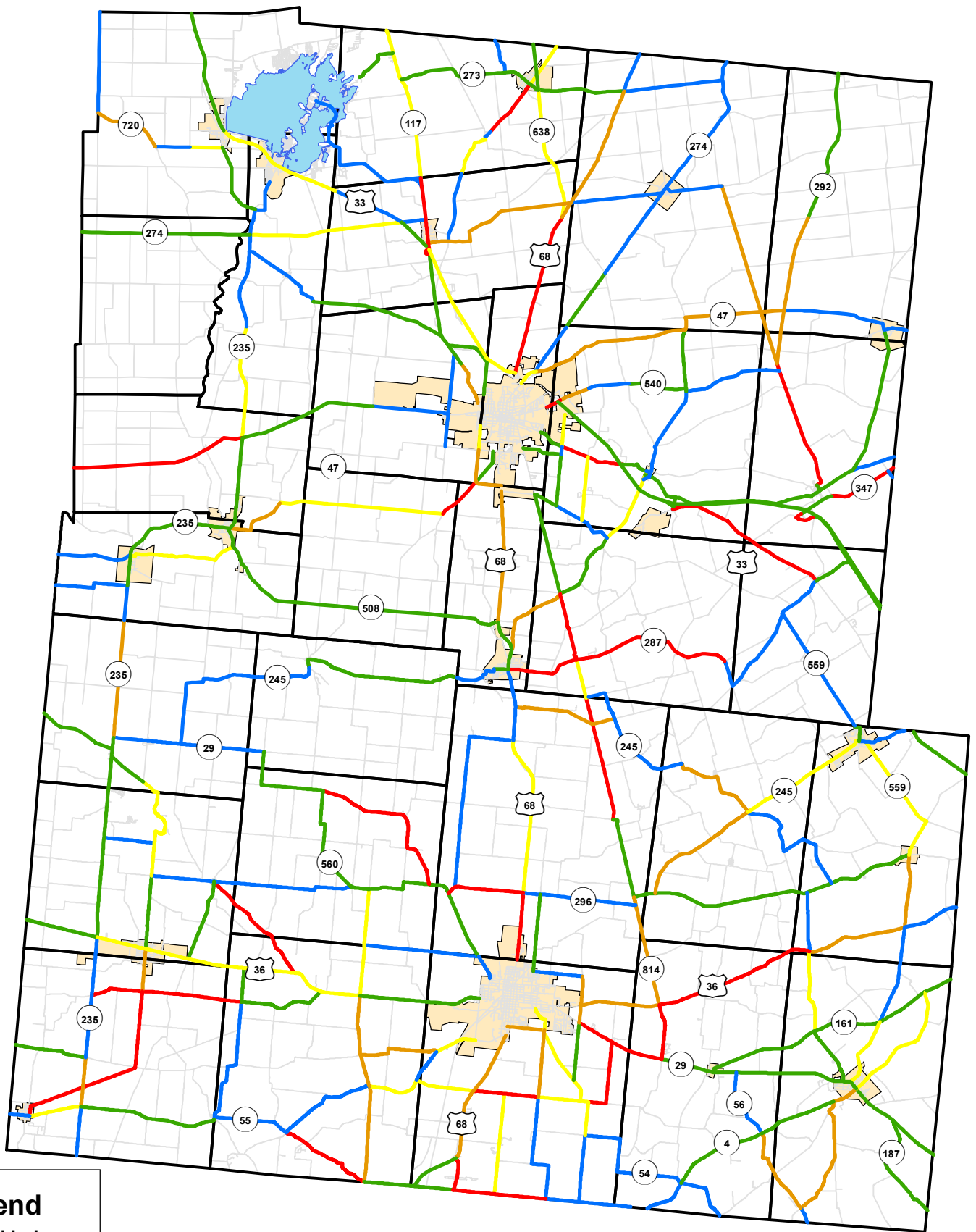


**Legend**  
*Hazard Index*

- 0 - 108
- 109 - 136
- 137 - 253

**2016-2018 High Hazard Intersections - Regional**

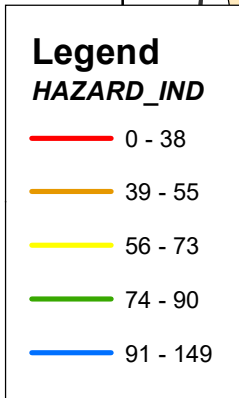
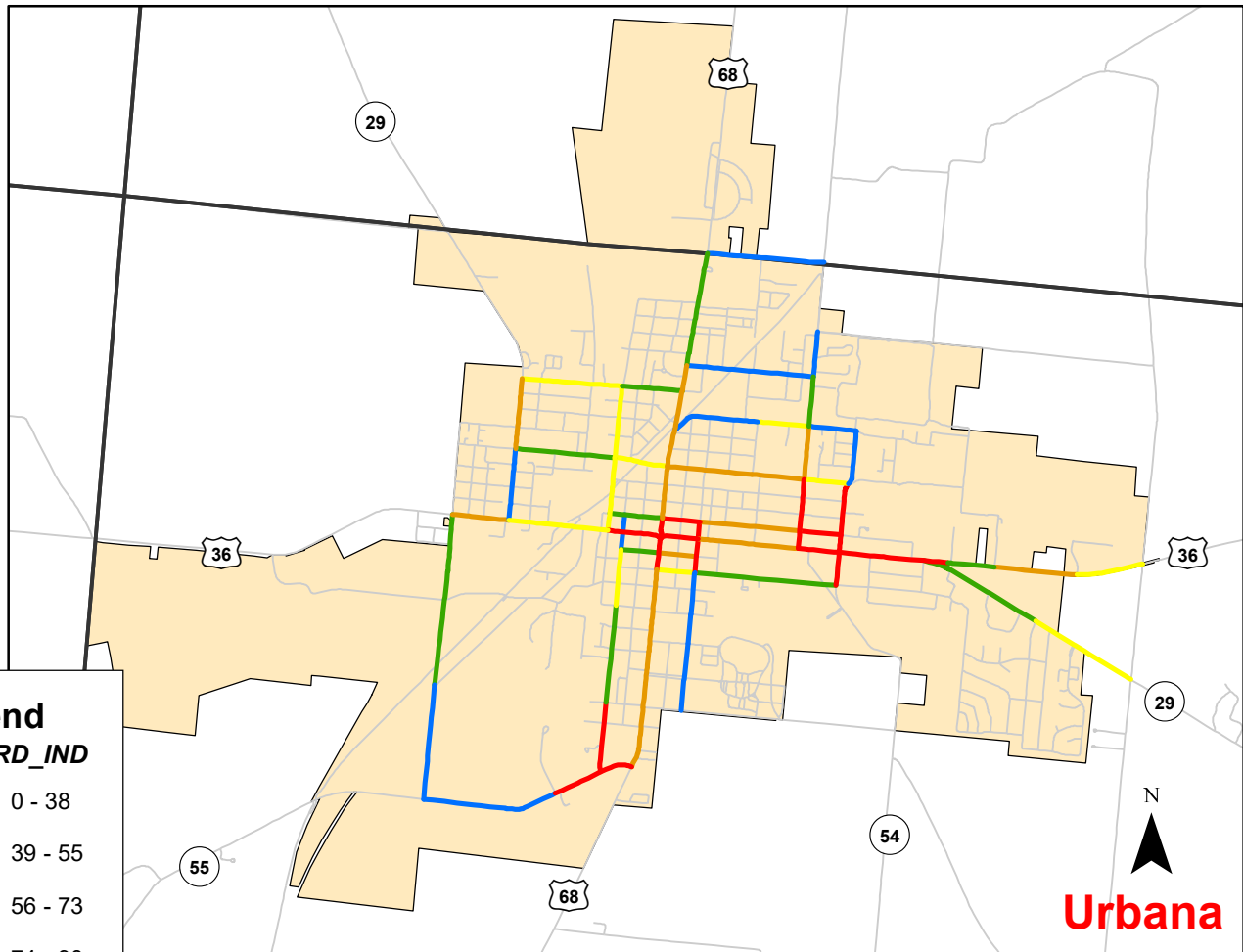
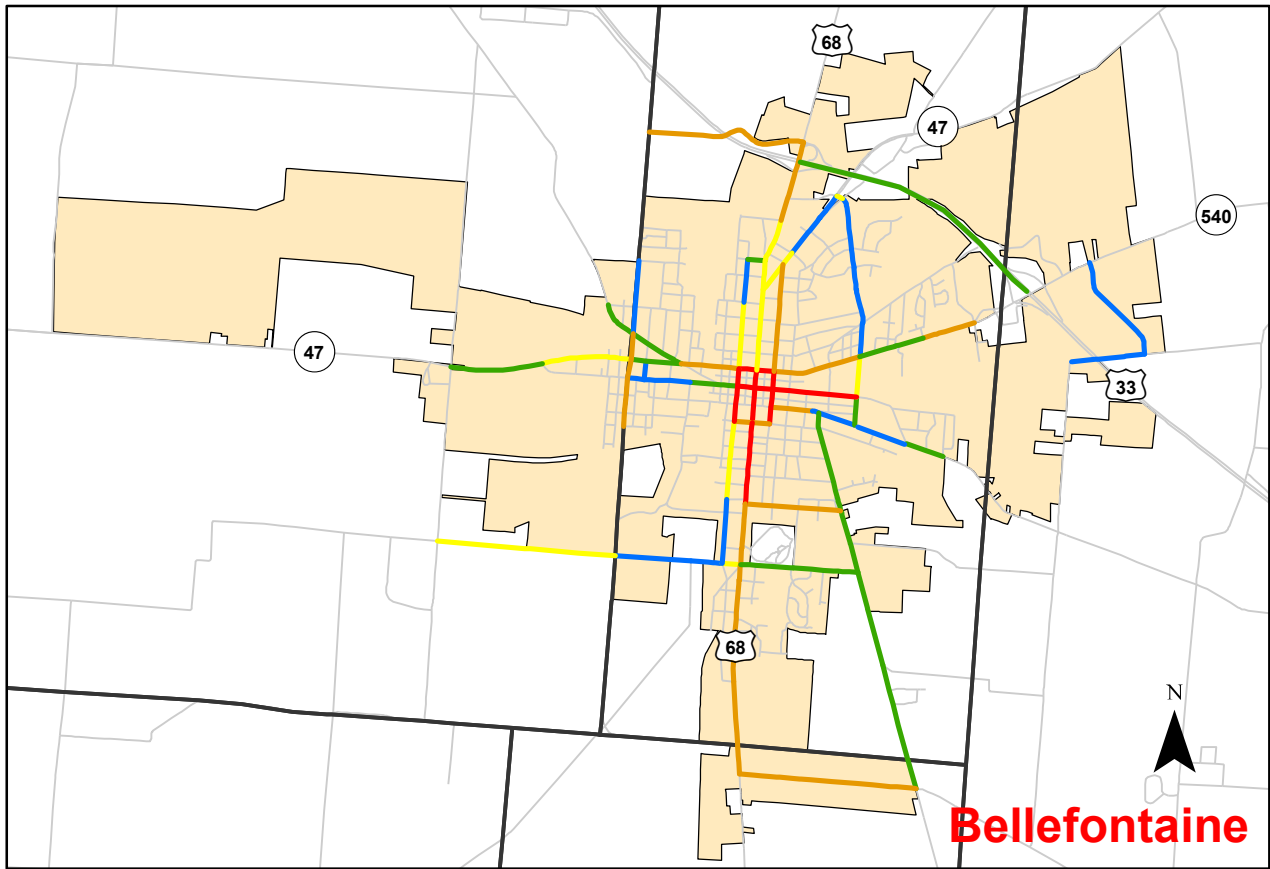


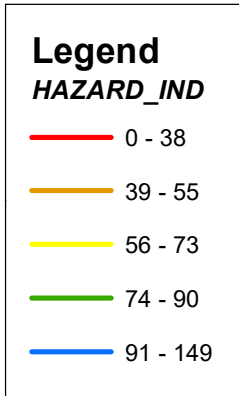
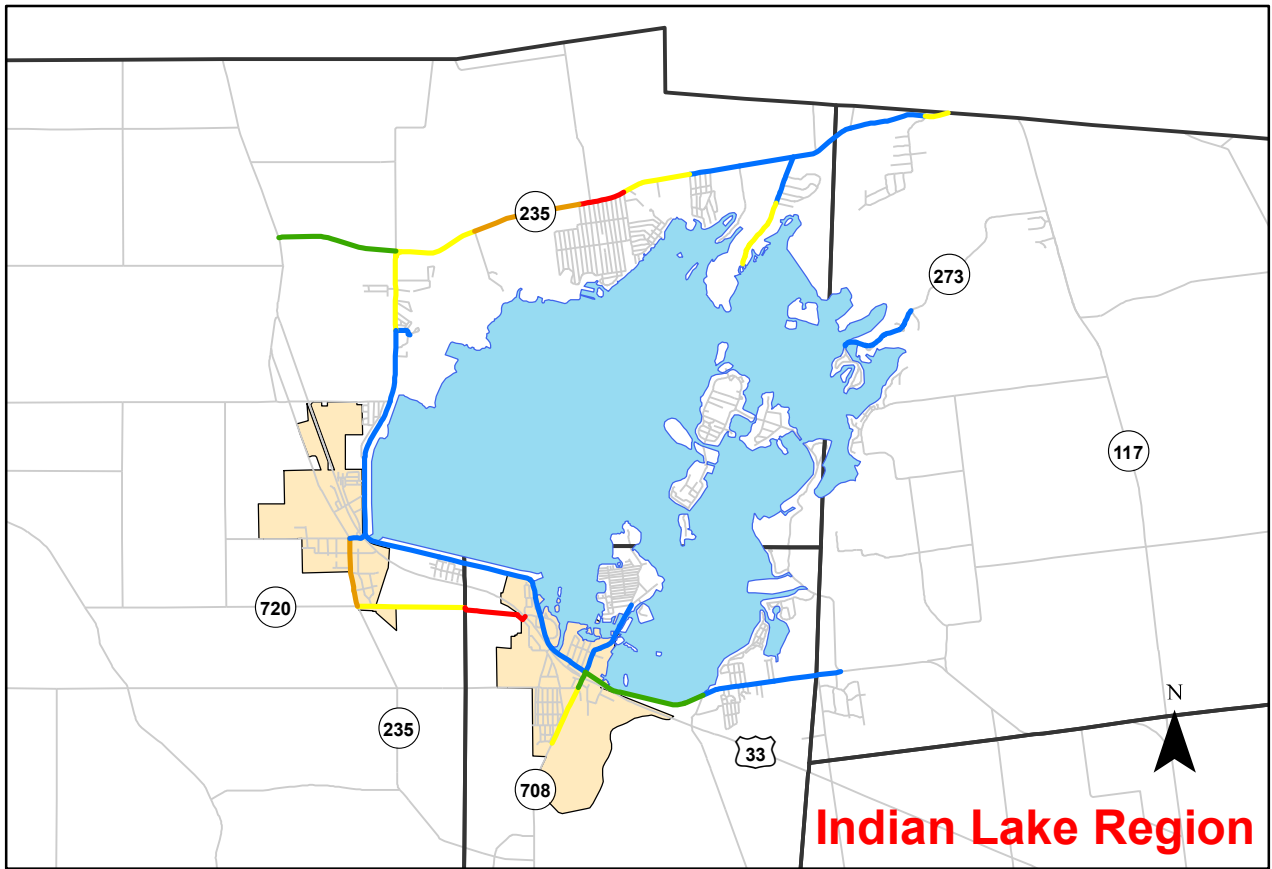


**Legend**  
**Hazard Index**

- 0 - 68
- 69 - 93
- 94 - 114
- 115 - 160
- 161 - 273







## **Appendix**

### ODOT District 7 2018 High Hazard Locations

2018 Rural Intersection Peak Searching Excess Locations (2014-2018)							Crashes Per Year											
Location Information							All Crashes				Fatal & Serious Injury Crashes				Fatal & All Injury Crashes			
Rank	District	County	Location	Site Type	Intersection Name	Begin Logpoint	Average Observed Crashes	Predicted Crashes	Expected Crashes	Expected Excess Crashes (Potential for Safety Improvement)	Average Observed Crashes	Predicted Crashes	Expected Crashes	Expected Excess Crashes	Average Observed Crashes	Predicted Crashes	Expected Crashes	Expected Excess Crashes
25	7	LOG	SR-235	Intersection	SR-235 at SR-47	8.18	5.75	1.08	4.92	3.84	0	0	0	0	1.67	0.4	1.24	0.84
87	7	CHP	SR-29	Intersection	SR-29 at TR-103 (THREE MILE RD)	23.27	3.96	1.22	3.51	2.29	0.77	0.1	0.56	0.46	2.49	0.47	1.87	1.4
123	7	LOG	SR-117	Intersection	SR-117 (LIMA ST) at SR-274	5.83	3.74	1.73	3.45	1.72	0	0	0	0	0	0	0	0

2018 Rural Non-Freeway Peak Searching Excess Segment Locations (2014-2018)							Crashes Per Mile Per Year											
Location Information							All Crashes				Fatal & Serious Injury Crashes				Fatal & All Injury Crashes			
Rank	District	County	Location	Site Type	Location	Begin Logpoint	Average Observed Crashes	Predicted Crashes	Expected Crashes	Expected Excess Crashes (Potential for Safety Improvement)	Average Observed Crashes	Predicted Crashes	Expected Crashes	Expected Excess Crashes	Average Observed Crashes	Predicted Crashes	Expected Crashes	Expected Excess Crashes
106	7	LOG	SR-347	Segment	east of US33	4.41	14.29	1.44	8.75	7.31	2.08	0.08	0.47	0.39	6.24	0.43	1.56	1.13
133	7	LOG	SR-117	Segment	south of SR274 W	6.03	20.08	1.89	8.62	6.73	0	0.14	0.12	0	2.15	0.7	0.89	0.19
301	7	LOG	SR-117	Segment	north of SR274 W	5.72	15.51	1.71	6.53	4.82	0	0.13	0.11	0	0	0.63	0.55	0
381	7	LOG	SR-117	Segment	south of SR274 W	6.23	13.38	1.89	6.14	4.25	0	0.14	0.12	0	4.31	0.7	1.18	0.48
439	7	LOG	SR-347	Segment	at SR347 merge west of US33	2.74	8.07	2.2	6.13	3.93	0	0	0	0	2.05	0.77	1.16	0.39

2018 Rural Freeway Peak Searching Excess Locations (2014-2018)							Crashes Per Mile Per Year (Interchange are Crashes Per Year Only)											
Location Information							All Crashes				Fatal & Serious Injury Crashes				Fatal & All Injury Crashes			
Rank	District	County	Location	Site Type	Location	Begin Logpoint	Average Observed Crashes	Predicted Crashes	Expected Crashes	Expected Excess Crashes (Potential for Safety Improvement)	Average Observed Crashes	Predicted Crashes	Expected Crashes	Expected Excess Crashes	Average Observed Crashes	Predicted Crashes	Expected Crashes	Expected Excess Crashes
554	7	LOG	US-33	Segment	south of CR10	20.68	16.3	3.14	7.03	3.89	0	0.13	0.12	0	7.97	0.81	1.15	0.34
710	7	LOG	US-33	Segment	south of SR347	26.9	14.52	3.18	6.51	3.33	0	0.13	0.13	0	0	0.82	0.79	0
784	7	LOG	US-33	Segment	at CR10	19.88	8.96	3.69	6.73	3.04	0	0	0	0	3.45	0.94	1.62	0.68
789	7	LOG	US-33	Segment	east of CR28	22.42	8.92	3.72	6.73	3.01	0	0	0	0	0	0.95	0.69	0

2018 Urban Intersection Peak Searching Excess Locations (2014-2018)								Crashes Per Year											
Location Information								All Crashes				Fatal & Serious Injury Crashes				Fatal & All Injury Crashes			
Rank	District	County	Location	Site Type	Intersection	Begin Logpoint	Average Observed Crashes	Predicted Crashes	Expected Crashes	Expected Excess Crashes (Potential for Safety Improvement)	Average Observed Crashes	Predicted Crashes	Expected Crashes	Expected Excess Crashes	Average Observed Crashes	Predicted Crashes	Expected Crashes	Expected Excess Crashes	
262	7	CHP	US-36	Intersection	US-36 (SCIOTO ST) at SR-54 (PATRICIA AVE)	15.756	18.28	7.2	17.44	10.24	0	0	0	0	4.5	1.76	3.79	2.03	

2018 Urban Non-Freeway Peak Searching Excess Segment Locations (2014-2018)								Crashes Per Mile Per Year											
Location Information								All Crashes				Fatal & Serious Injury Crashes				Fatal & All Injury Crashes			
Rank	District	County	Location	Site Type	Subtype	Begin Logpoint	Average Observed Crashes	Predicted Crashes	Expected Crashes	Expected Excess Crashes (Potential for Safety Improvement)	Average Observed Crashes	Predicted Crashes	Expected Crashes	Expected Excess Crashes	Average Observed Crashes	Predicted Crashes	Expected Crashes	Expected Excess Crashes	
108	7	CHP	US-68	Segment	at US68 and US36	6.6	532.39	5.61	405.38	399.77	8.91	0.21	4.31	4.1	53.48	1.68	26.09	24.41	
202	7	CHP	US-68	Segment	at US68 and US36	6.62	212.87	4.96	157.54	152.58	0	0	0	0	44.97	1.48	20.46	18.98	
661	7	LOG	US-68	Segment	north of Lake Ave.	7.51	57.11	14.14	50.92	36.78	2.07	0.36	1.41	1.05	18.64	3.96	12.96	9	
884	7	CHP	US-36	Segment	north of Upper Valley Pike	14.97	60.29	5.39	47.29	41.9	0	0	0	0	16.66	1.61	8.8	7.19	
1003	7	LOG	US-68	Segment	north of TR200	6.4	62.21	12.34	54.05	41.71	0	0	0	0	14.71	3.42	9.9	6.48	
1290	7	LOG	US-68	Segment	south of Colton Ave.	7.81	69.8	14.14	61.78	47.64	0	0	0	0	12.43	3.96	9.15	5.19	
1625	7	LOG	US-68	Segment	south of Gunntown Rd.	6.05	105.21	9.11	83.67	74.56	0	0	0	0	11.5	2.47	6.72	4.25	
1838	7	LOG	SR-47	Segment	west of N. Detroit St.	13.2	15.22	5.91	12.95	7.04	1.63	0.14	0.8	0.66	9.75	1.55	5.16	3.61	
2110	7	LOG	US-68	Segment	north of Rush Ave.	9.16	11.15	4.32	10.63	6.31	1.81	0.16	1.43	1.27	5.42	1.28	4.46	3.18	

2018 Suburban Non-Freeway Peak Searching Excess Locations (2014-2018)								Crashes Per Mile Per Year											
Location Information								All Crashes				Fatal & Serious Injury Crashes				Fatal & All Injury Crashes			
Rank	District	County	Location	Site Type	Subtype	Begin Logpoint	Average Observed Crashes	Predicted Crashes	Expected Crashes	Expected Excess Crashes (Potential for Safety Improvement)	Average Observed Crashes	Predicted Crashes	Expected Crashes	Expected Excess Crashes	Average Observed Crashes	Predicted Crashes	Expected Crashes	Expected Excess Crashes	
131	7	LOG	US-33	Segment	south of SR720	5.27	32.89	4.19	30.52	26.33	3.77	0.15	2.89	2.74	15.08	1.24	11.7	10.46	
132	7	LOG	US-33	Segment	south of SR720	5.37	29.02	4.19	26.97	22.78	3.77	0.15	2.89	2.74	15.08	1.24	11.7	10.46	
772	7	LOG	SR-235	Segment	east of SR366	20.35	7.82	2.18	6.98	4.8	1.91	0.08	1.18	1.1	5.72	0.62	3.7	3.08	
793	7	CHP	US-68	Segment	south of SR55	5.29	12.97	5.73	12.54	6.81	3.6	0.21	2.99	2.78	5.4	1.72	4.73	3.01	