

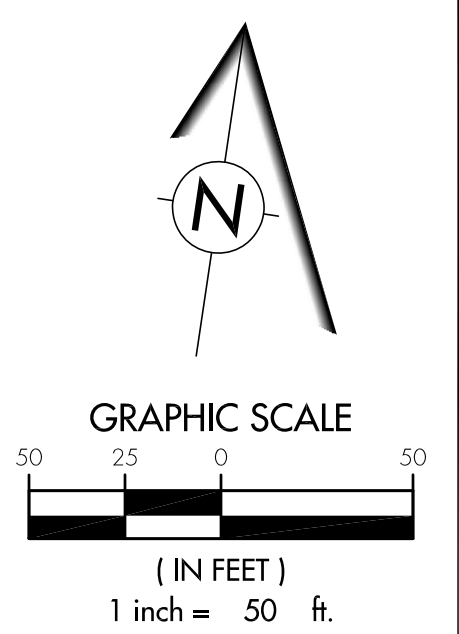
LEGEND

EXISTING:

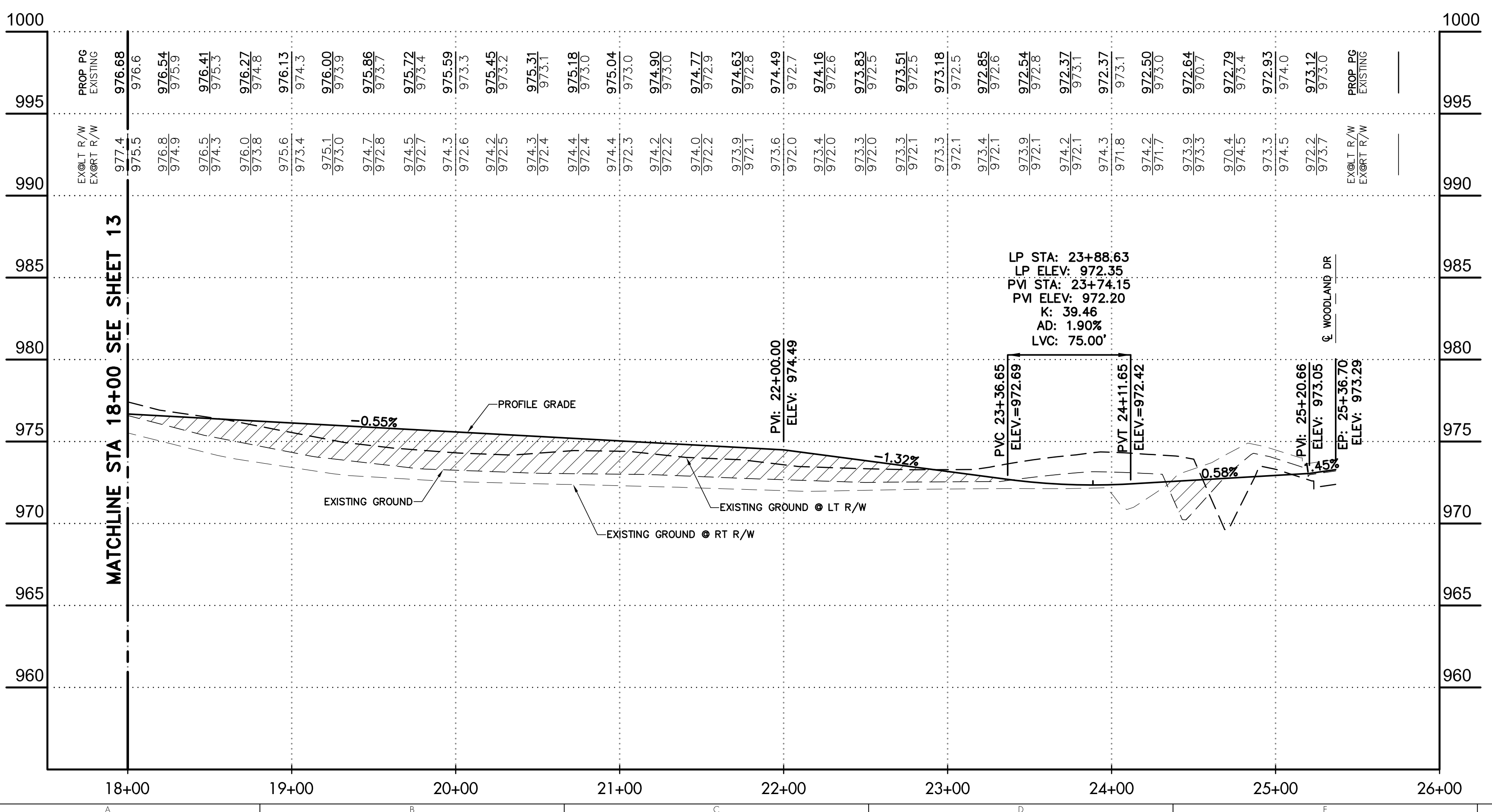
- RIGHT-OF-WAY
- ROADWAY CENTERLINE
- UTILITY EASEMENT
- WATERLINE
- STORM SEWER
- SANITARY SEWER
- ELECTRIC
- TELEPHONE
- GAS

PROPOSED:

- RIGHT-OF-WAY
- ROADWAY CENTERLINE
- UTILITY EASEMENT
- BUILDING SETBACK LINE
- WATERLINE
- WATER VALVE
- FIRE HYDRANT
- WATER SERVICE
- STORM SEWER
- STORM SEWER MANHOLE
- STORM SEWER CATCH BASIN
- STORM SEWER CURB INLET
- SANITARY SEWER
- SANITARY MANHOLE
- SANITARY SERVICE
- ELECTRIC
- ELECTRIC TRANSFORMER BOX
- ODOT 203 FILL
- COMPACTED GRANULAR BACKFILL
- SIDEWALK TO BE INSTALLED BY DEVELOPER. ALL OTHER AREAS TO BE INSTALLED BY HOME BUILDER



REVISION	DATE	BY	DESCRIPTION OF CHANGE



TerrainEvolution
Your bridge between Vision and Success

720 East Broad Street | Suite 203 | Columbus, OH 43215
 P: 614.385.1090 | F: 614.385.1055 | E: info@terreinevolution.com

JEROME TOWNSHIP, UNION COUNTY, OHIO

JEROME VILLAGE
 VILLAGE NEIGHBORHOOD SECTION 12

PRELIMINARY STREET PLAN & PROFILE
 OAKSHADE WAY

DRAWING SET STATUS:

- PRELIMINARY ENGINEERING SET
- AGENCY REVIEW SET
- CONSTRUCTION DOCUMENT SET
- AS-BUILT DOCUMENT SET

DESIGN	DRAFT	CHECK
DGR	DGR	JPW

PROJECT NO.: 26-009

DATE: APRIL, 2026

SCALE:
 HORIZONTAL: 1" = 50'
 VERTICAL: 1" = 5'

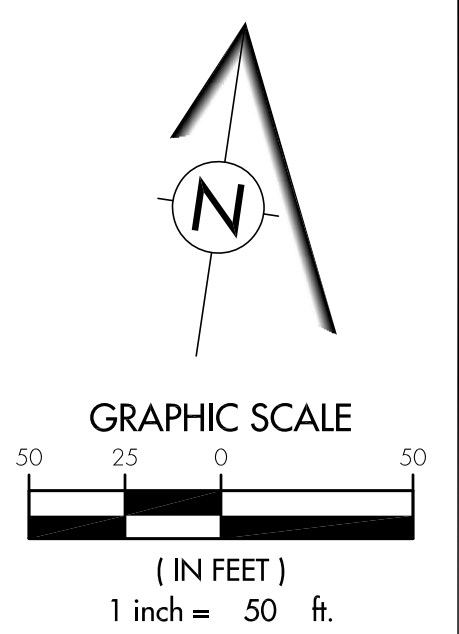
SHEET NO.: 14/23



LEGEND

- BEAVER DAM INLET PROTECTION
- SWPPP MAILBOX
- STRAW BALE BARRIER
- SILT FENCING
- 36" ORANGE SILT FENCE
- STABILIZED CONSTRUCTION ENTRANCE
- VERTIPRO INLET PROTECTION APPLIANCE
- JURISDICTIONAL STREAM BUFFER (NO DISTURBANCE ALLOWED)
- TEMPORARY SEDIMENT BASIN CONTROL STRUCTURE
- 100-YR PONDING LIMITS
- CONCRETE WASHOUT AREA
- WETLANDS

NOTE:
ALL EROSION AND SEDIMENT CONTROL PRACTICES ARE SUBJECT TO FIELD MODIFICATION AT THE DISCRETION OF COUNTY AND/OR THE OHIO EPA



REVISION	DATE	DESCRIPTION OF CHANGE

TerrainEvolution

Your bridge between Vision and Success

720 East Broad Street | Suite 203 | Columbus, OH 43215
 P: 614.385.1090 | F: 614.385.1055 | E: info@terrainevolution.com

JEROME TOWNSHIP, UNION COUNTY, OHIO

JEROME VILLAGE
VILLAGE NEIGHBORHOOD SECTION 12

GRADING PLAN & EROSION & SEDIMENT CONTROL PLAN

DRAWING SET STATUS:

- PRELIMINARY ENGINEERING SET
- AGENCY REVIEW SET
- CONSTRUCTION DOCUMENT SET
- AS-BUILT DOCUMENT SET

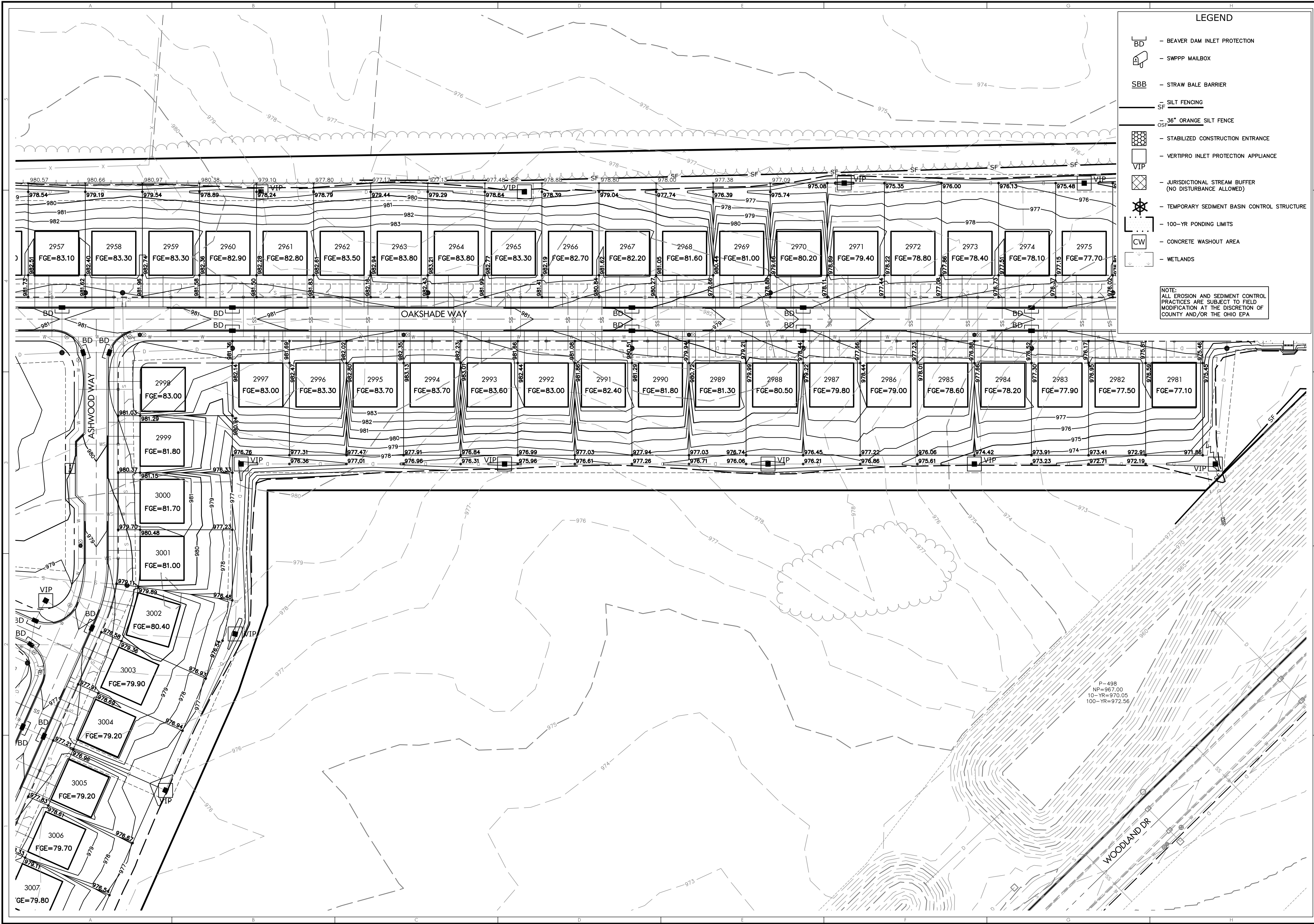
DESIGN	DRAFT	CHECK
DGR	DGR	JPW

PROJECT NO.: 26-009

DATE: APRIL, 2026

SCALE:
HORIZONTAL: 1" = 50'
VERTICAL: N/A

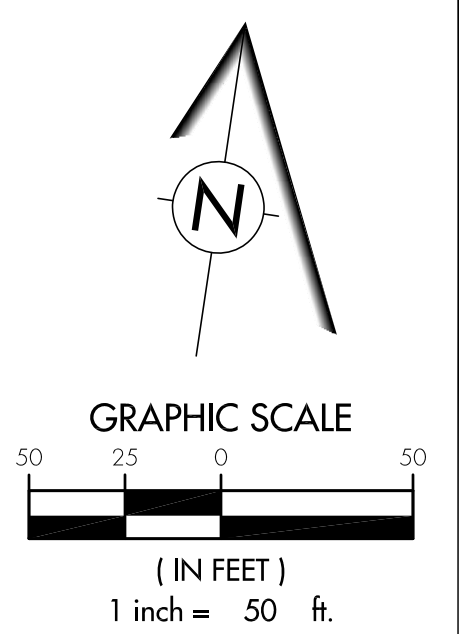
SHEET NO.: 16/23



LEGEND

- BEAVER DAM INLET PROTECTION
- SWPPP MAILBOX
- STRAW BALE BARRIER
- SILT FENCING
- 36" ORANGE SILT FENCE
- STABILIZED CONSTRUCTION ENTRANCE
- VERTIPRO INLET PROTECTION APPLIANCE
- JURISDICTIONAL STREAM BUFFER (NO DISTURBANCE ALLOWED)
- TEMPORARY SEDIMENT BASIN CONTROL STRUCTURE
- 100-YR PONDING LIMITS
- CONCRETE WASHOUT AREA
- WETLANDS

NOTE:
ALL EROSION AND SEDIMENT CONTROL PRACTICES ARE SUBJECT TO FIELD MODIFICATION AT THE DISCRETION OF COUNTY AND/OR THE OHIO EPA



REVISION	DATE	DESCRIPTION OF CHANGE

TerrainEvolution
Your bridge between Vision and Success

720 East Broad Street | Suite 203 | Columbus, OH 43215
P: 614.385.1090 | F: 614.385.1055 | E: info@terrainevolution.com

JEROME VILLAGE
VILLAGE NEIGHBORHOOD SECTION 12
GRADING PLAN & EROSION & SEDIMENT CONTROL PLAN

DRAWING SET STATUS:

- PRELIMINARY ENGINEERING SET
- AGENCY REVIEW SET
- CONSTRUCTION DOCUMENT SET
- AS-BUILT DOCUMENT SET

DESIGN	DRAFT	CHECK
DGR	DGR	JPW

PROJECT NO.: 26-009

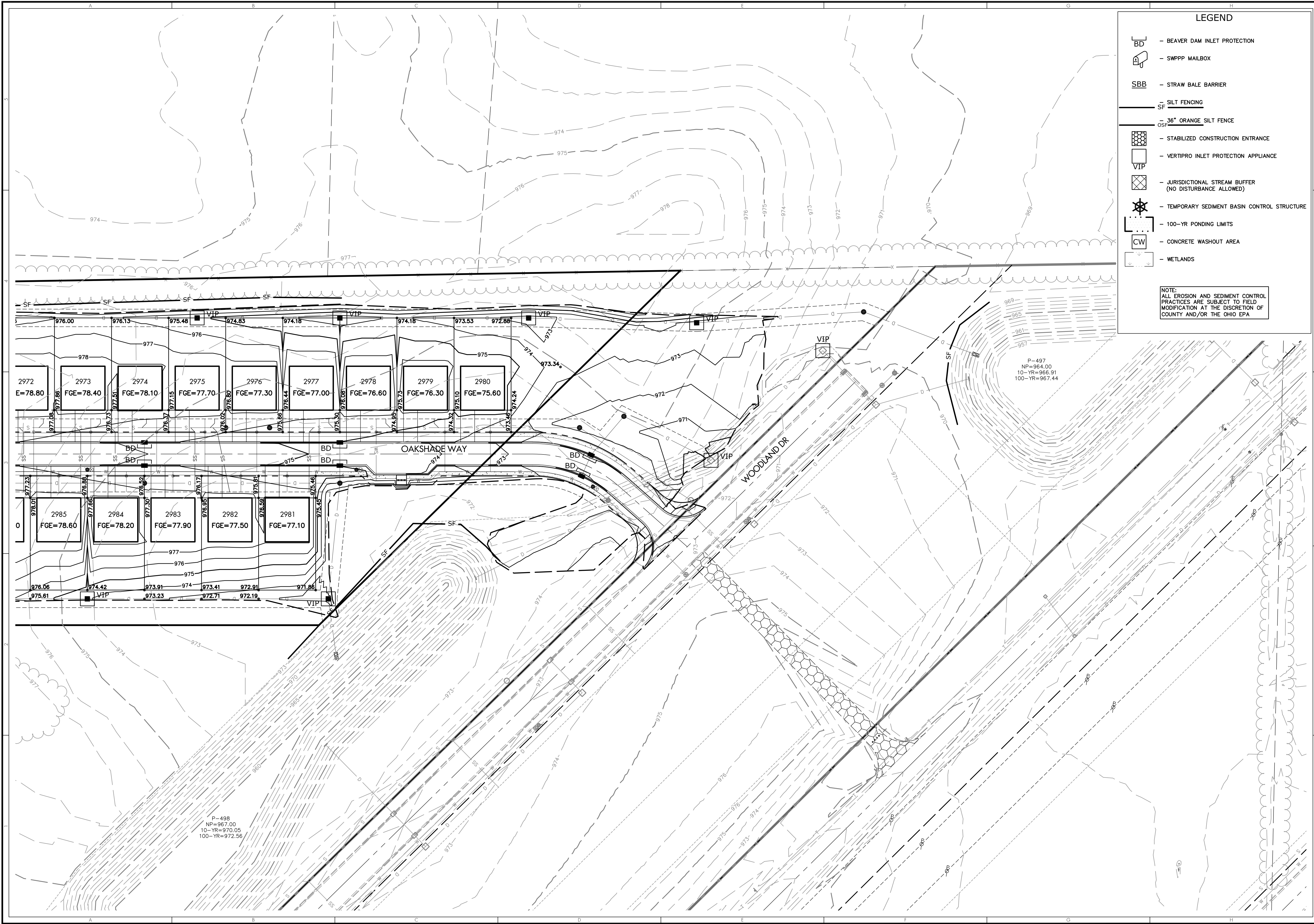
DATE: APRIL, 2026

SCALE:
HORIZONTAL: 1" = 50'
VERTICAL: N/A

SHEET NO.: 17/23

JEROME TOWNSHIP, UNION COUNTY, OHIO
 P-498
 NP=967.00
 10-YR=970.05
 100-YR=972.56
 \N:\2026\09\09\05\Engineering\Jerome_Village_Neighborhood_Section_12\26-009\Grading_Sediment_Control_Plan.dwg by dgr on 04/22/2026 @ 09:08:01 am © Terrain Evolution, Inc.

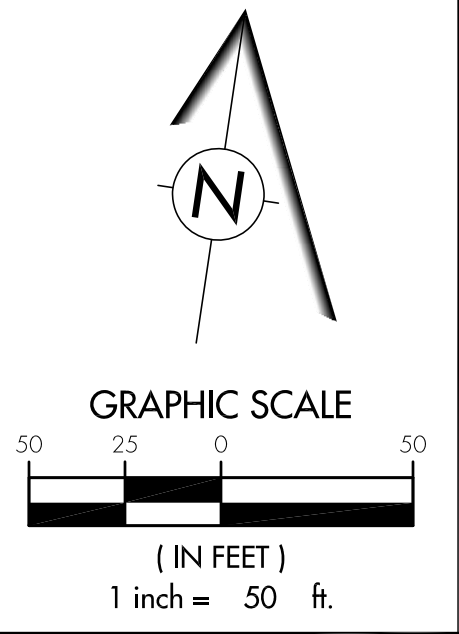




LEGEND

- BEAVER DAM INLET PROTECTION
- SWPPP MAILBOX
- STRAW BALE BARRIER
- SILT FENCING
- .36" ORANGE SILT FENCE
- STABILIZED CONSTRUCTION ENTRANCE
- VERTIPRO INLET PROTECTION APPLIANCE
- JURISDICTIONAL STREAM BUFFER (NO DISTURBANCE ALLOWED)
- TEMPORARY SEDIMENT BASIN CONTROL STRUCTURE
- 100-YR PONDING LIMITS
- CONCRETE WASHOUT AREA
- WETLANDS

NOTE:
ALL EROSION AND SEDIMENT CONTROL PRACTICES ARE SUBJECT TO FIELD MODIFICATION AT THE DISCRETION OF COUNTY AND/OR THE OHIO EPA



REVISION	DATE

CHANGE ORDER SCHEDULE	DESCRIPTION OF CHANGE

TerrainEvolution

Your bridge between Vision and Success

720 East Broad Street | Suite 203 | Columbus, OH 43215
P: 614.385.1090 | F: 614.385.1055 | E: info@terrainevolution.com

JEROME TOWNSHIP, UNION COUNTY, OHIO

JEROME VILLAGE

VILLAGE NEIGHBORHOOD SECTION 12

GRADING PLAN & EROSION & SEDIMENT CONTROL PLAN

DRAWING SET STATUS:

- PRELIMINARY ENGINEERING SET
- AGENCY REVIEW SET
- CONSTRUCTION DOCUMENT SET
- AS-BUILT DOCUMENT SET

DESIGN	DRAFT	CHECK
DGR	DGR	JPW

PROJECT NO.: 26-009

DATE: APRIL, 2026

SCALE:
HORIZONTAL: 1" = 50'
VERTICAL: N/A

SHEET NO.: 19/23

