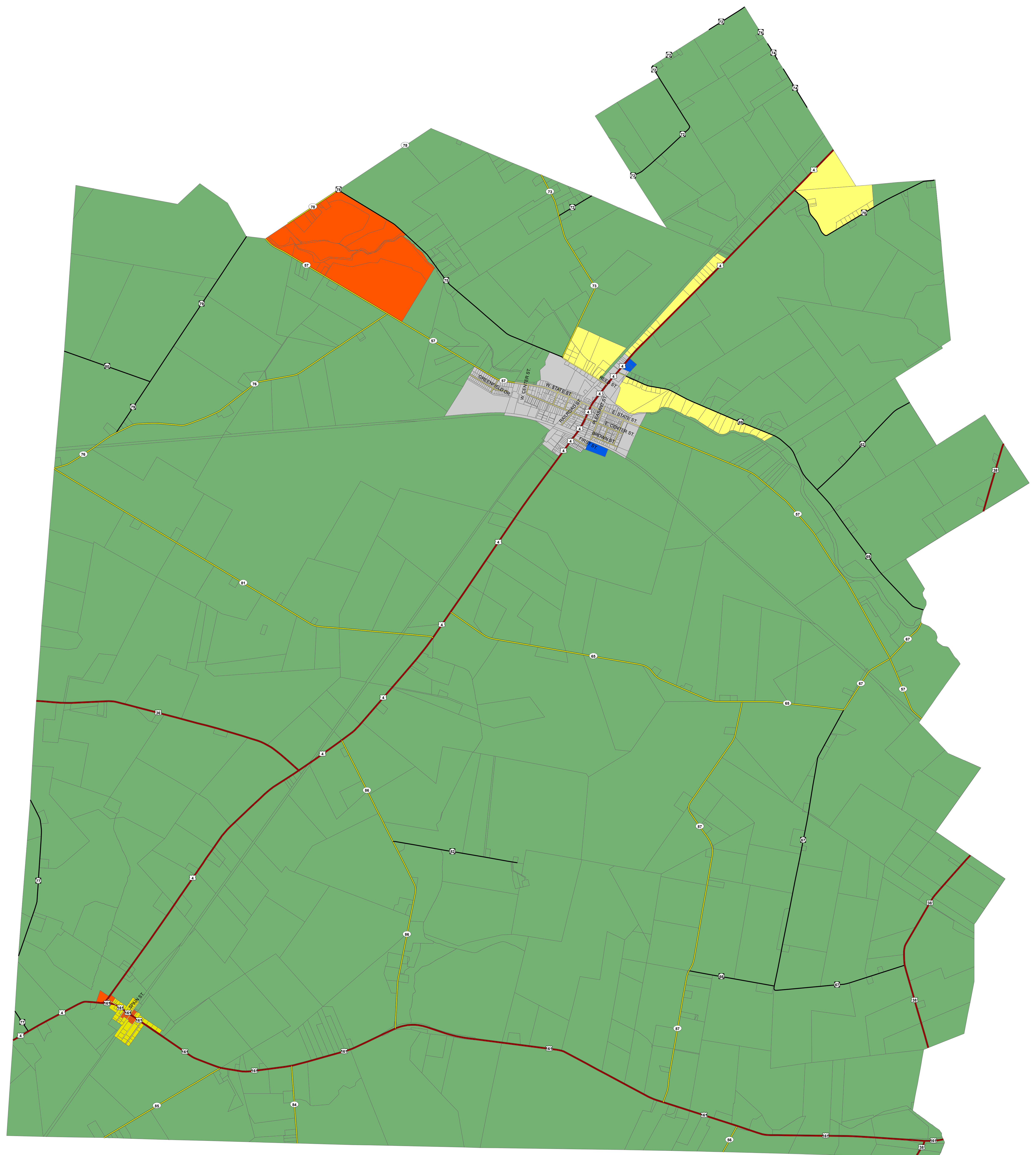
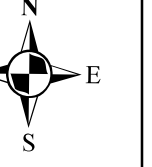


# Union Township Zoning Map

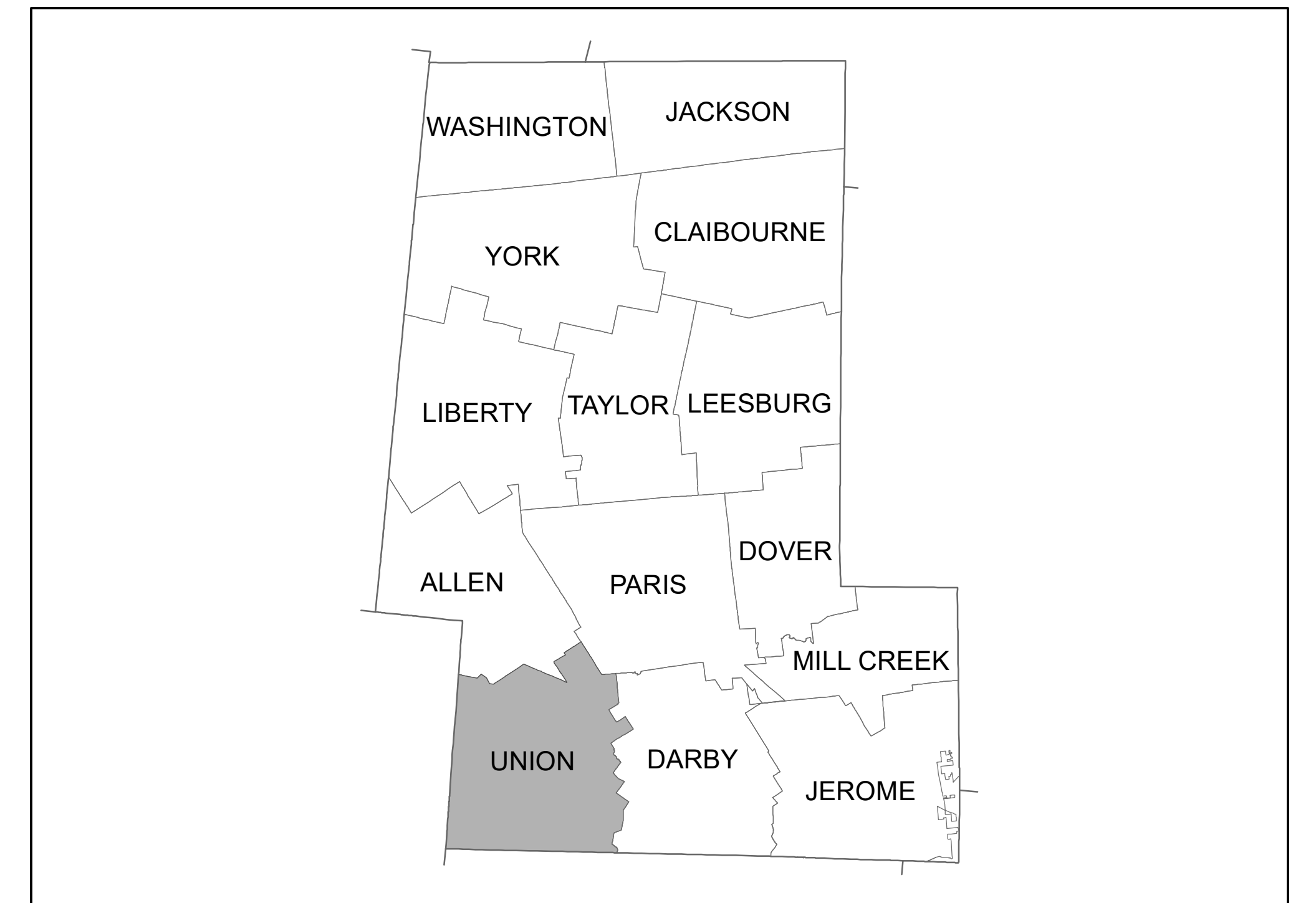
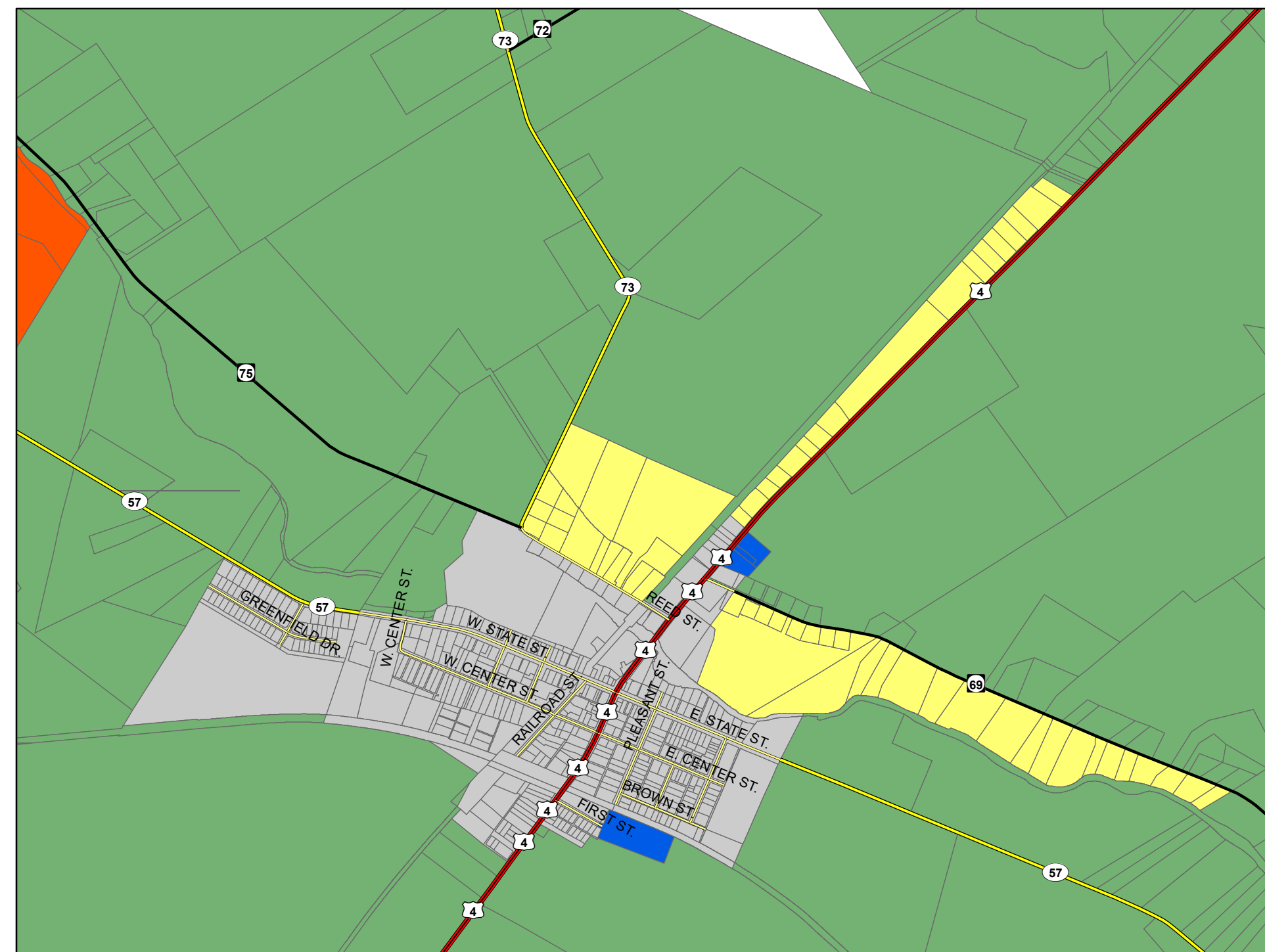


0 0.2 0.4 0.8 1.2 1.6 2 2.4 Miles

## Irwin (Unincorporated)



## Milford Center



Roads		Zoning Districts	
	Township Road		U-1
	Township Highway		R-1
	County Highway		R-2
	US/State Highway		B-2
			M-1
			Milford Center



**Logan-Union-Champaign  
Regional Planning Commission**  
10820 St. Rt. 347  
East Liberty, OH 43319  
(937) 666-3431

Map Created: September, 2004  
Map Revised: November 12, 2019 (ACS)

This is to certify that this is the Official Zoning Map referred to in Section 700 of the Zoning Resolution of the Township of Union, Union County, Ohio

Originally adopted May 1983. Amendments adopted on the following dates:

\_\_\_\_\_  
Chairperson,  
Union Township  
Board of Trustees

\_\_\_\_\_  
Union Township  
Fiscal Officer