

GLACIER POINT SECTION 2 PHASE 3

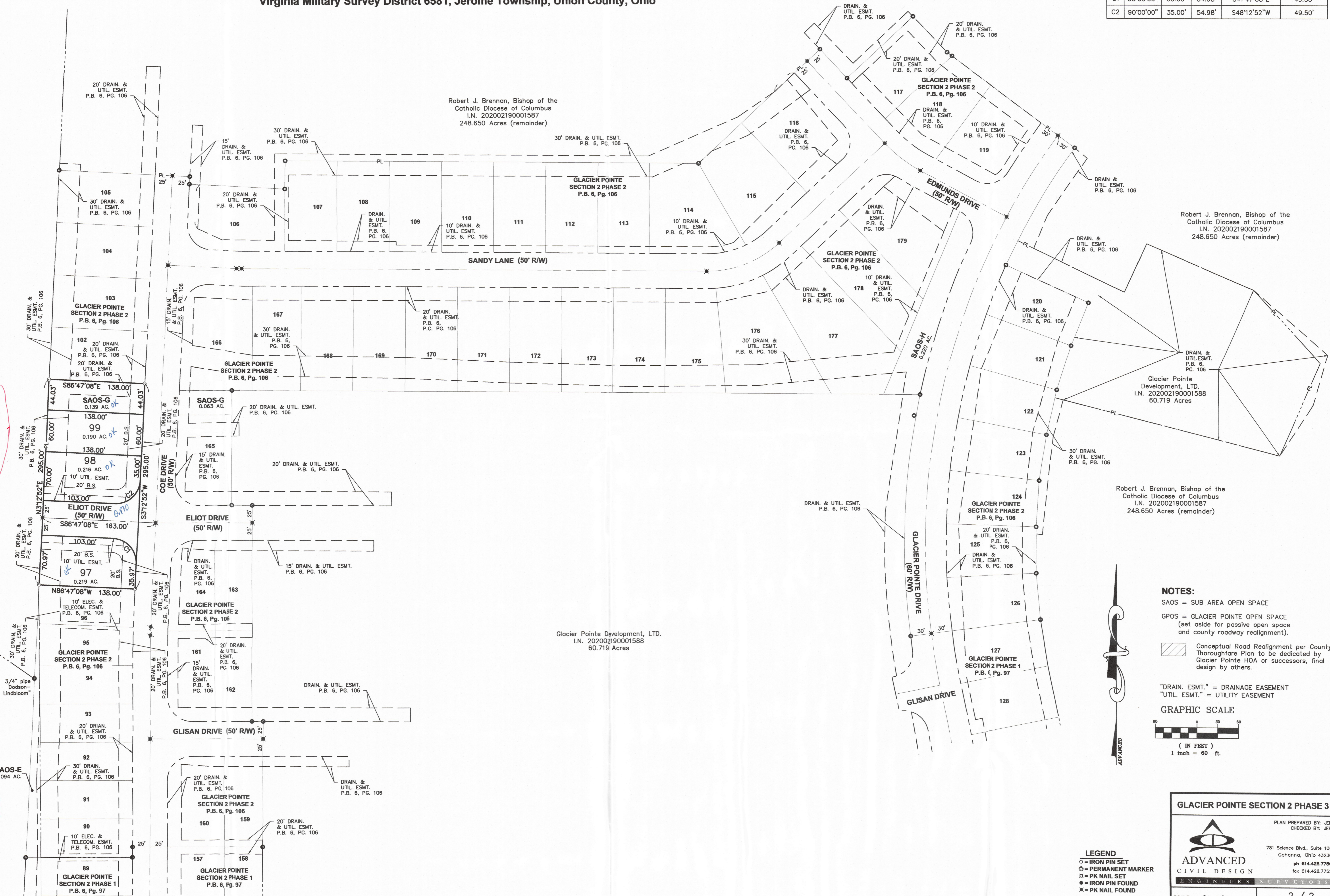
Virginia Military Survey District 6581, Jerome Township, Union County, Ohio

CURVE TABLE					
NO.	DELTA	RADIUS	LENGTH	CHORD BEARING	CHORD DIST.
C1	90°00'00"	35.00'	54.98'	S41°47'08"E	49.50'
C2	90°00'00"	35.00'	54.98'	S48°12'52"W	49.50'

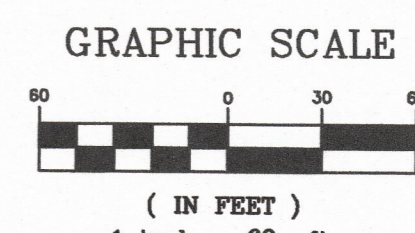
Z:\16-0005-394\0005-394 Final Plat_Sect3.dwg sheet3 Mer 20, 2024 - 4:40:22pm jphelps

White Homes
Philip E. Scott and Mary Susan Scott, Trustees
I.N. 201408260000000006763
I.N. 201408260000000006763

White Homes
Jerry L. Scott and Judith Ellen Scott, Trustees of the Jerry Lynn Scott Trust
dated July 21, 1998
I.N. 201609700007090
66.928 Acres



- NOTES:**
- SAOS = SUB AREA OPEN SPACE
 - GPOS = GLACIER POINTE OPEN SPACE (set aside for passive open space and county roadway realignment).
 - Conceptual Road Realignment per County Thoroughfare Plan to be dedicated by Glacier Pointe HOA or successors, final design by others.
 - "DRAIN. ESMT." = DRAINAGE EASEMENT
 - "UTIL. ESMT." = UTILITY EASEMENT



- LEGEND**
- = IRON PIN SET
 - ⊙ = PERMANENT MARKER
 - ⊕ = PK NAIL SET
 - = IRON PIN FOUND
 - ⊗ = PK NAIL FOUND

GLACIER POINT SECTION 2 PHASE 3

PLAN PREPARED BY: JEP
CHECKED BY: JEP

781 Science Blvd., Suite 100
Columbus, Ohio 43230
ph 614.428.7750
fax 614.428.7755

SCALE: 1" = 60'
DATE: March 20, 2024

SHEET 2 / 2
JOB NO.: 20-0006-548